

## F-86 SABRE ME1015

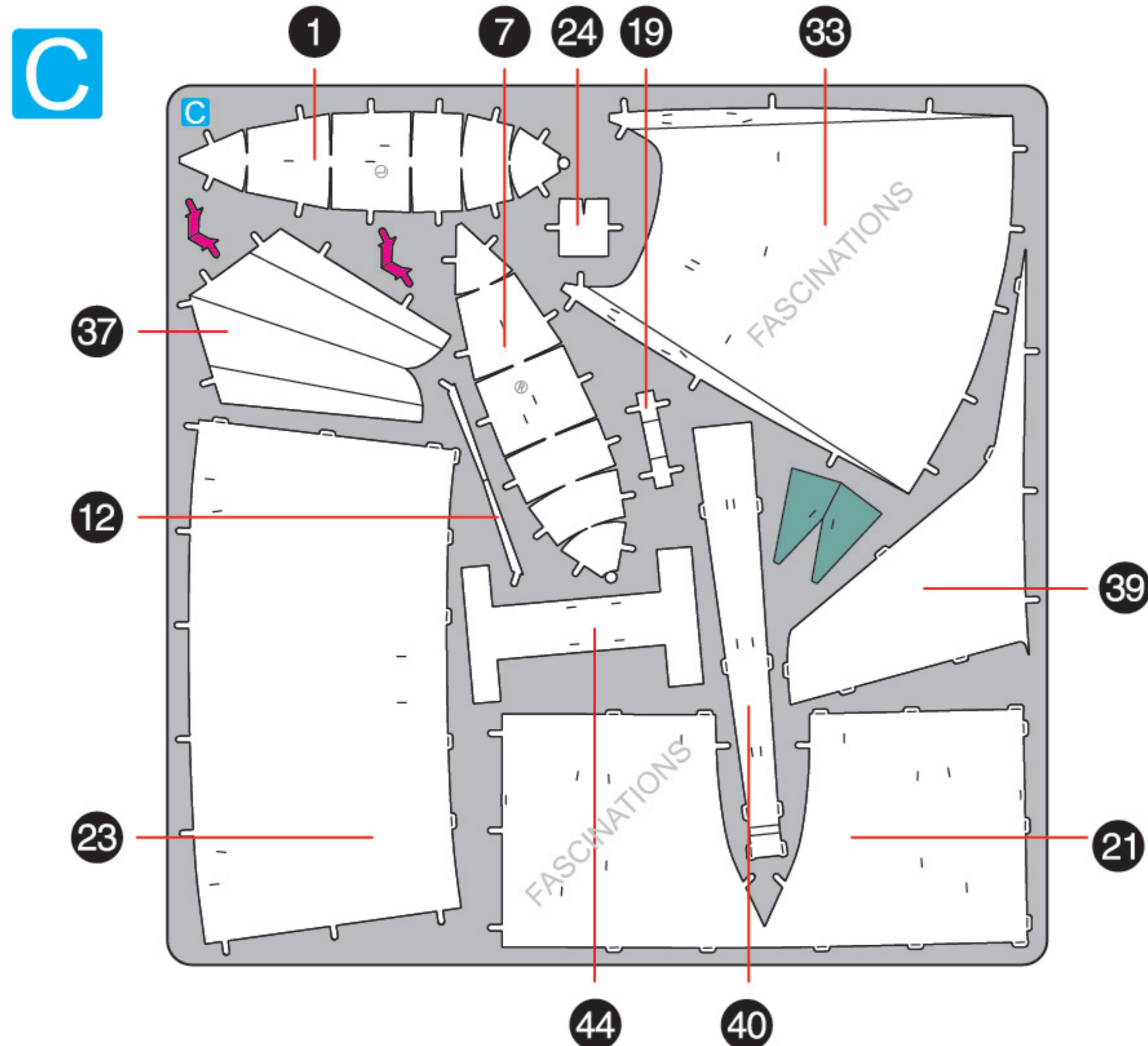
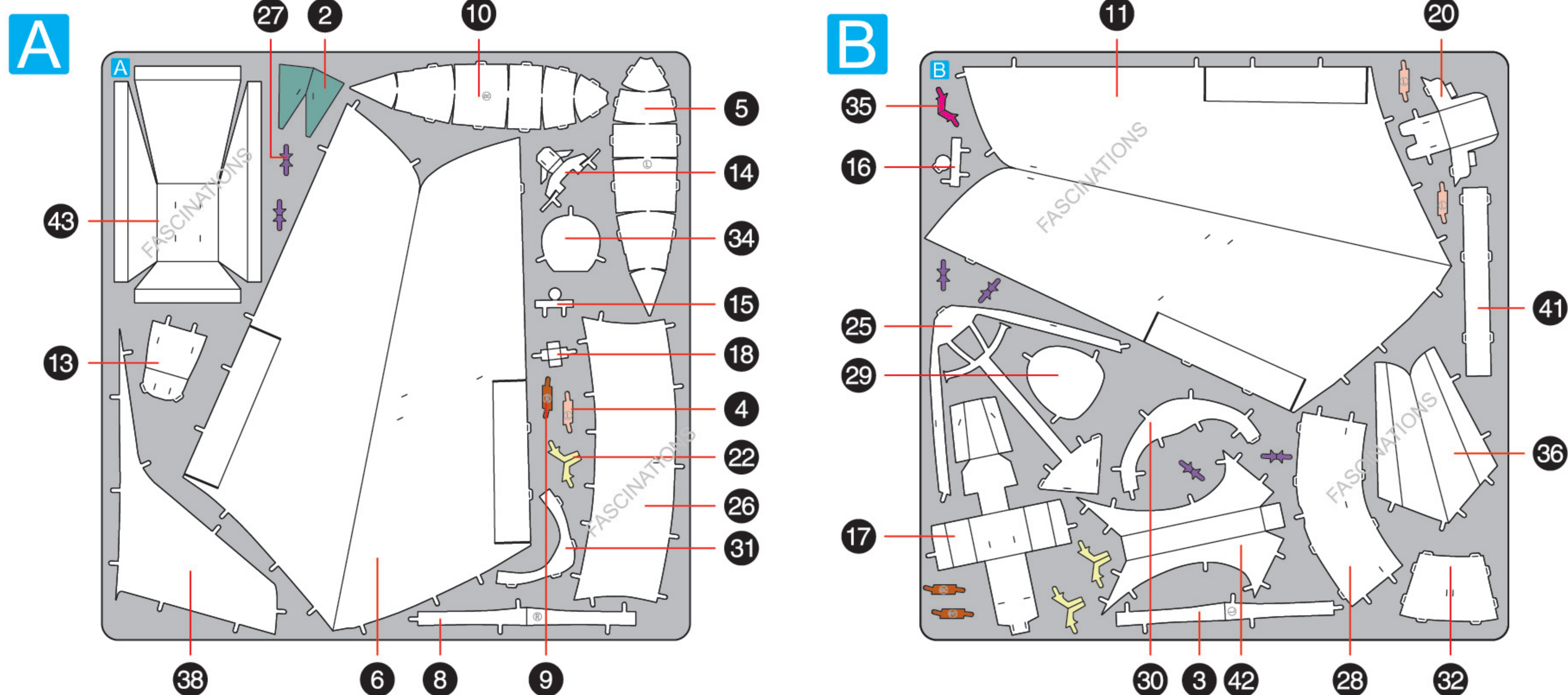


360°  
view

It is highly recommended that you visit  
[www.metalearth.com/360/ME1015](http://www.metalearth.com/360/ME1015)  
to see the completed model before assembling your own

### METAL SHEETS

Parts with same color are duplicates



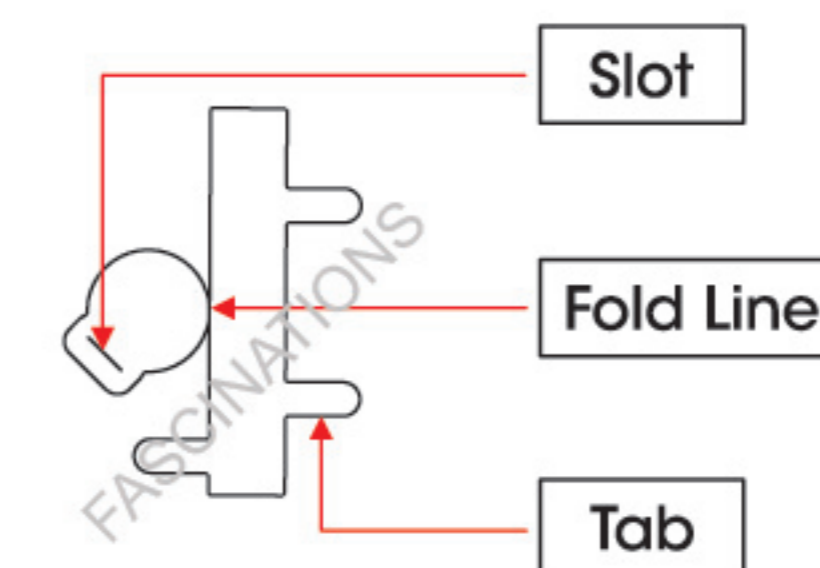
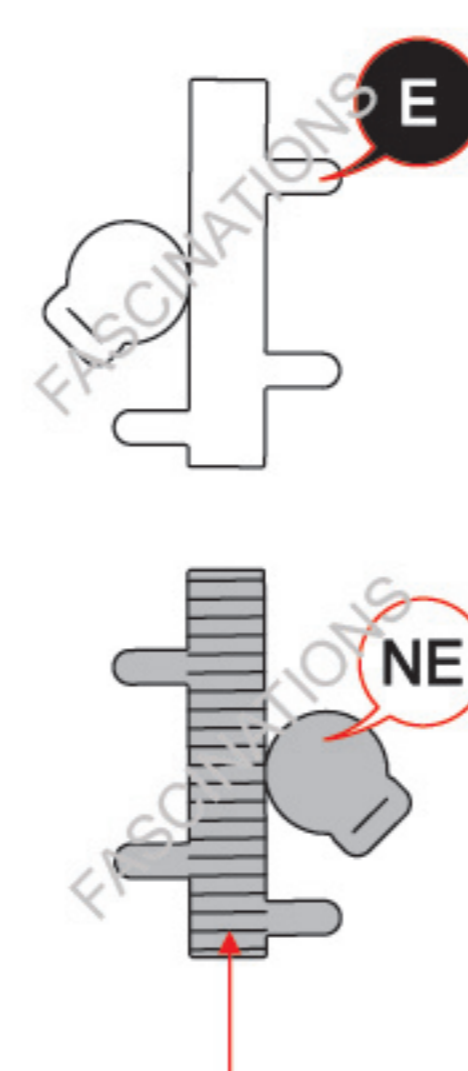
In order to avoid possible injury from sharp edges, please carefully discard the metal sheets after parts have been removed.



Go to [www.metalearth.com/360/ME1015](http://www.metalearth.com/360/ME1015) to see the zoomable PDF version of this instruction sheet

### TO CREATE THE BEST CONNECTIONS

B  
16



Consider these engraved stripes as supporting features for the bend

#### Legends:

- E** Engraved/ Color side
- NE** Non - engraved/ Silver side
- Attention point
- Insert tab and bend 90 degrees
- Insert tab and twist 90 degrees

#### Recommended tools:

- Wire cutters: helpful for taking parts from the metal sheets.

- Tweezers or needle nose pliers: helpful for folding parts, bending and twisting tabs.

#### Assembly tip:

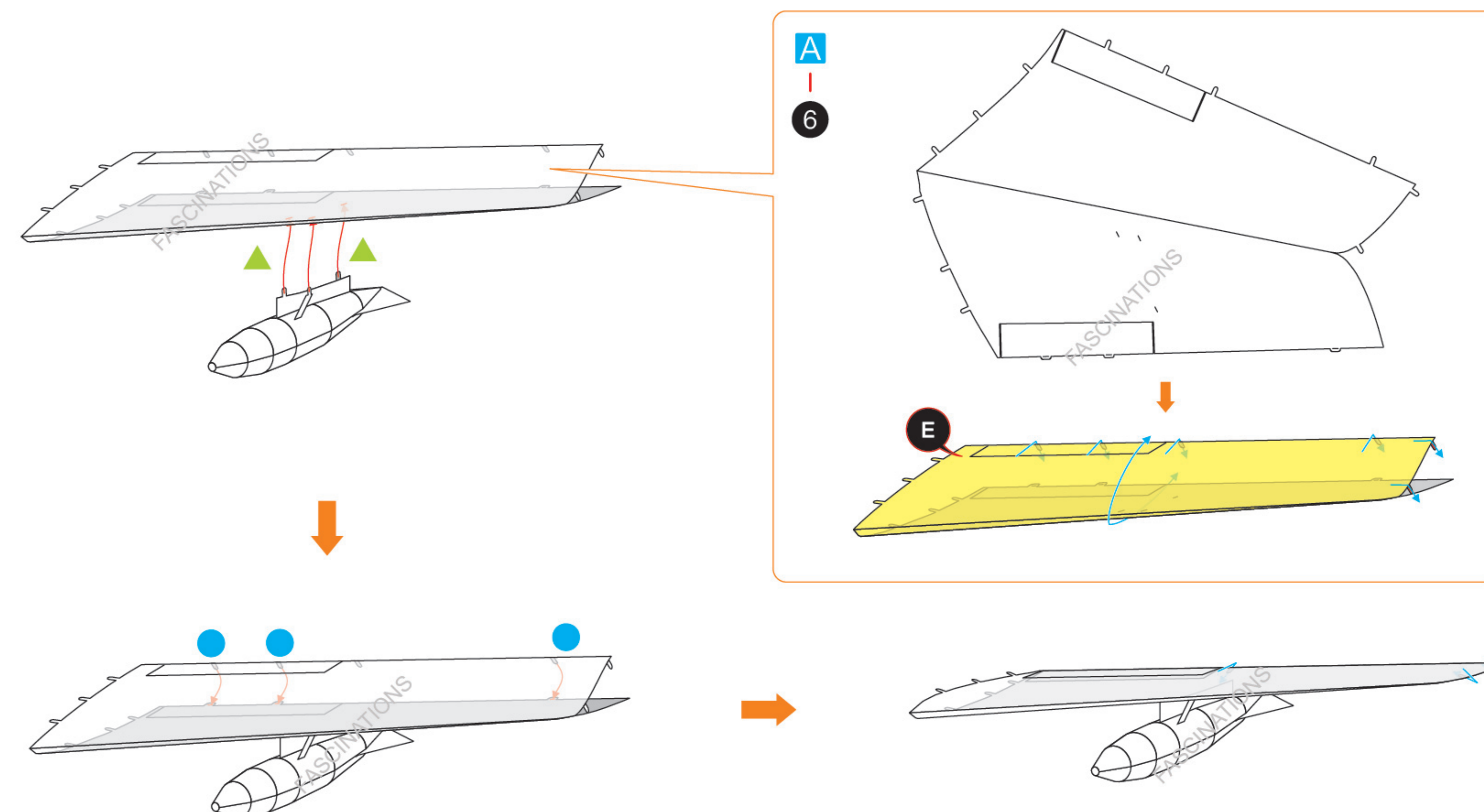
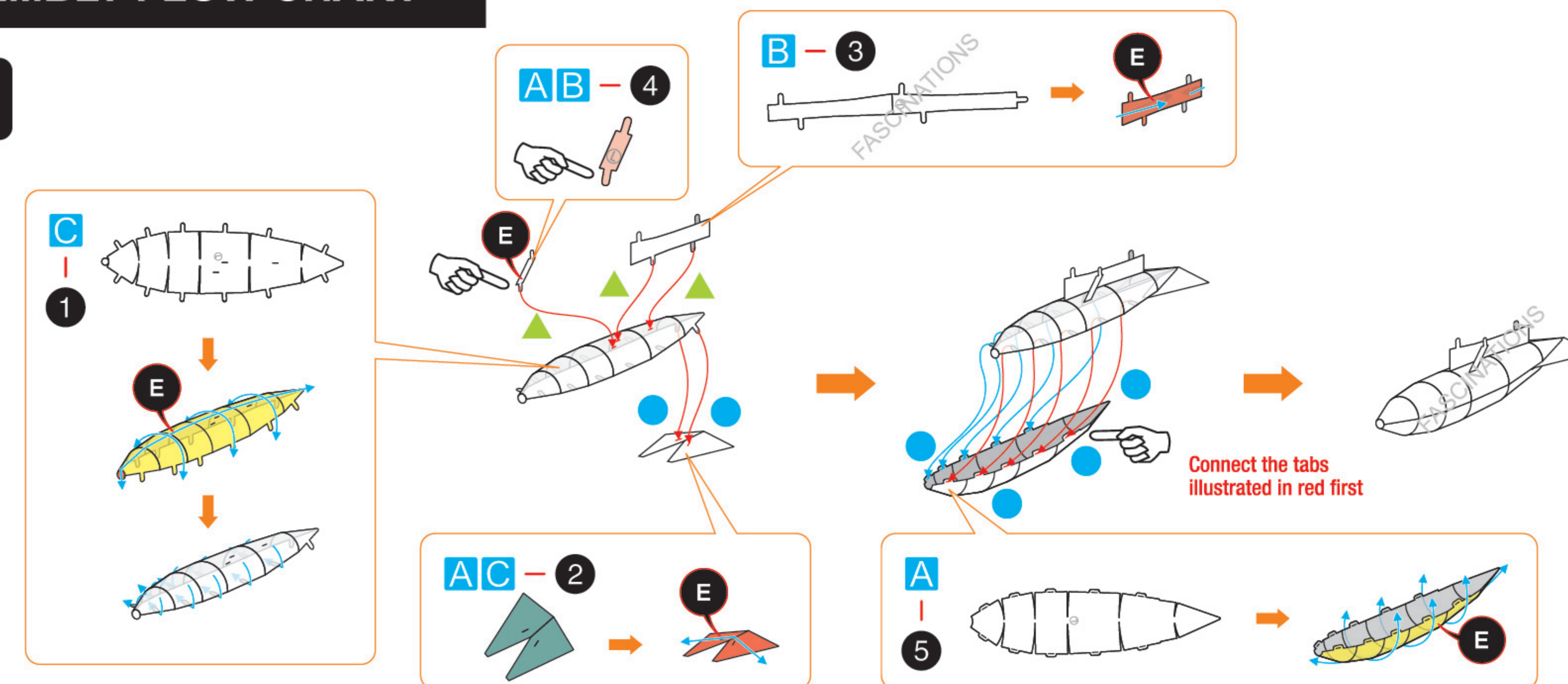
If needed, slightly twist tabs to hold parts together then untwist and bend them down for a nice finish.

Yellow areas should be curled

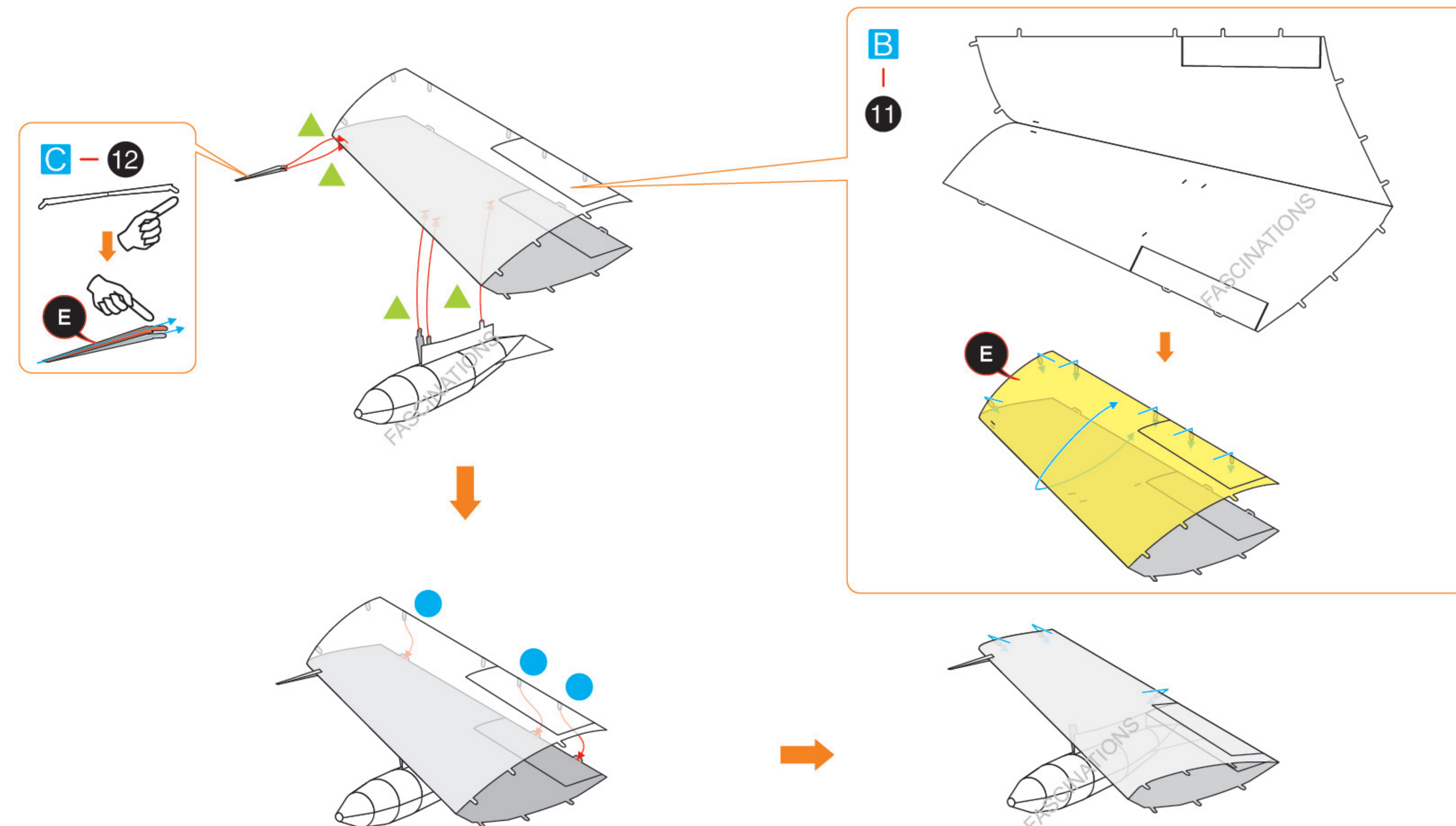
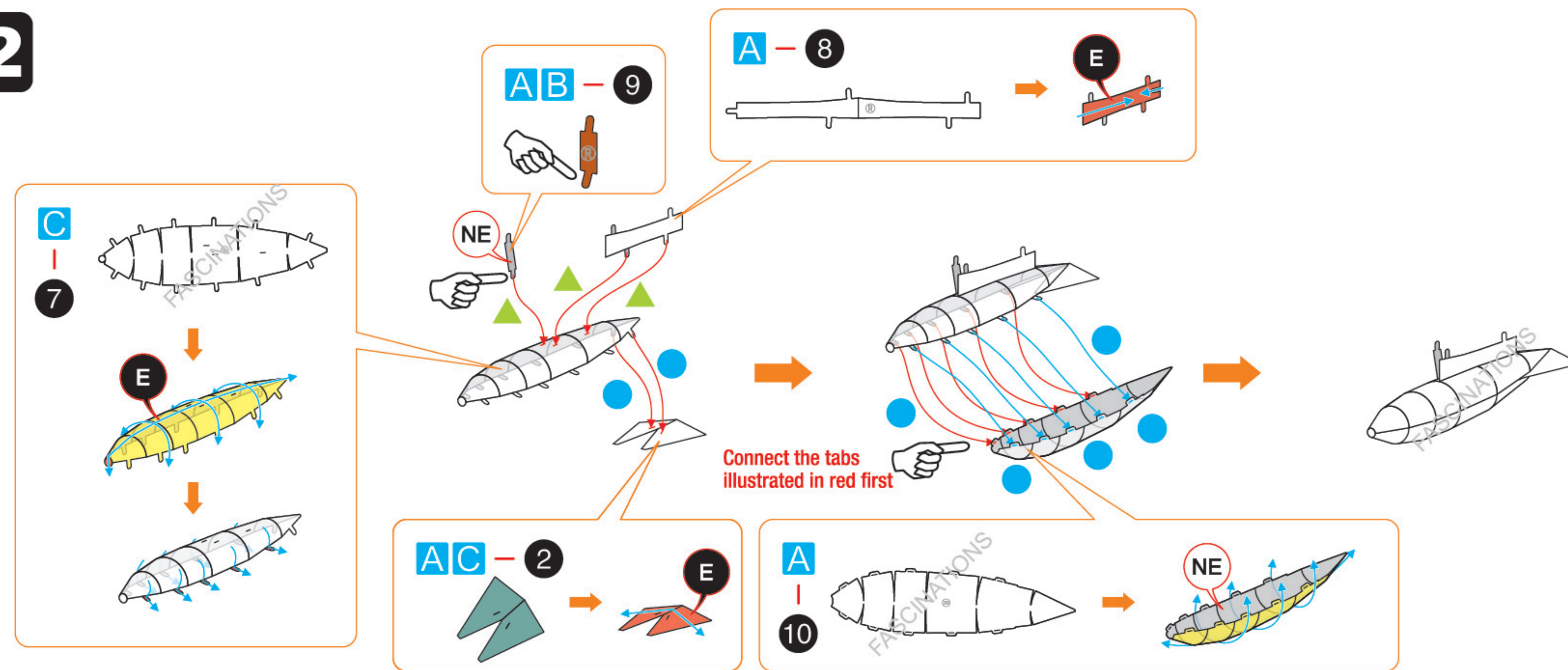
Red areas should be folded

### ASSEMBLY FLOW CHART

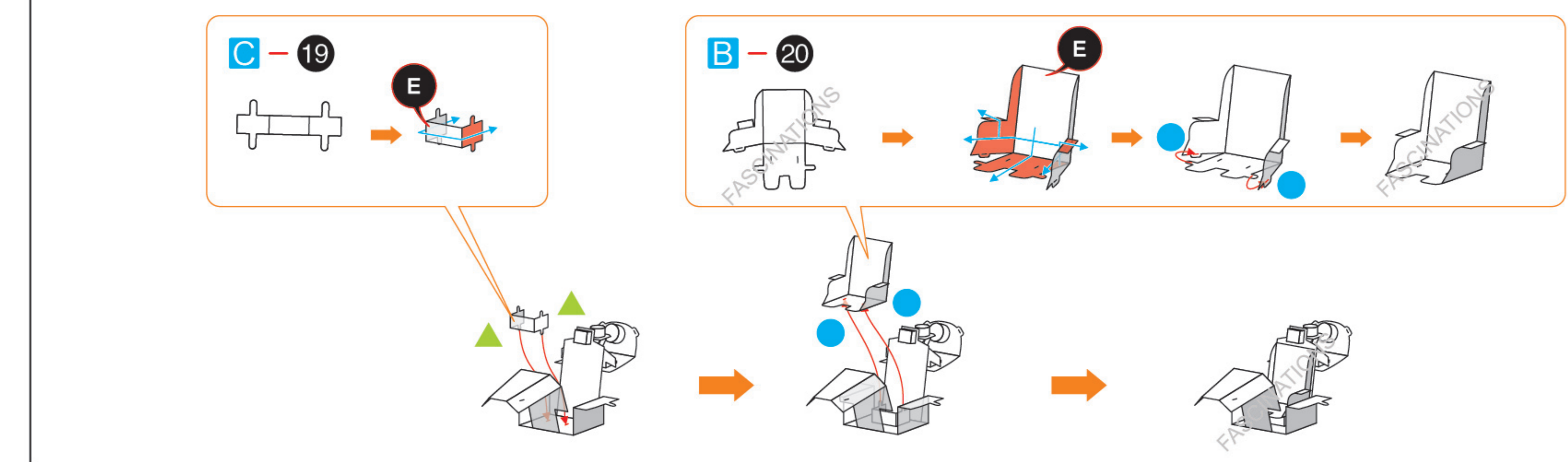
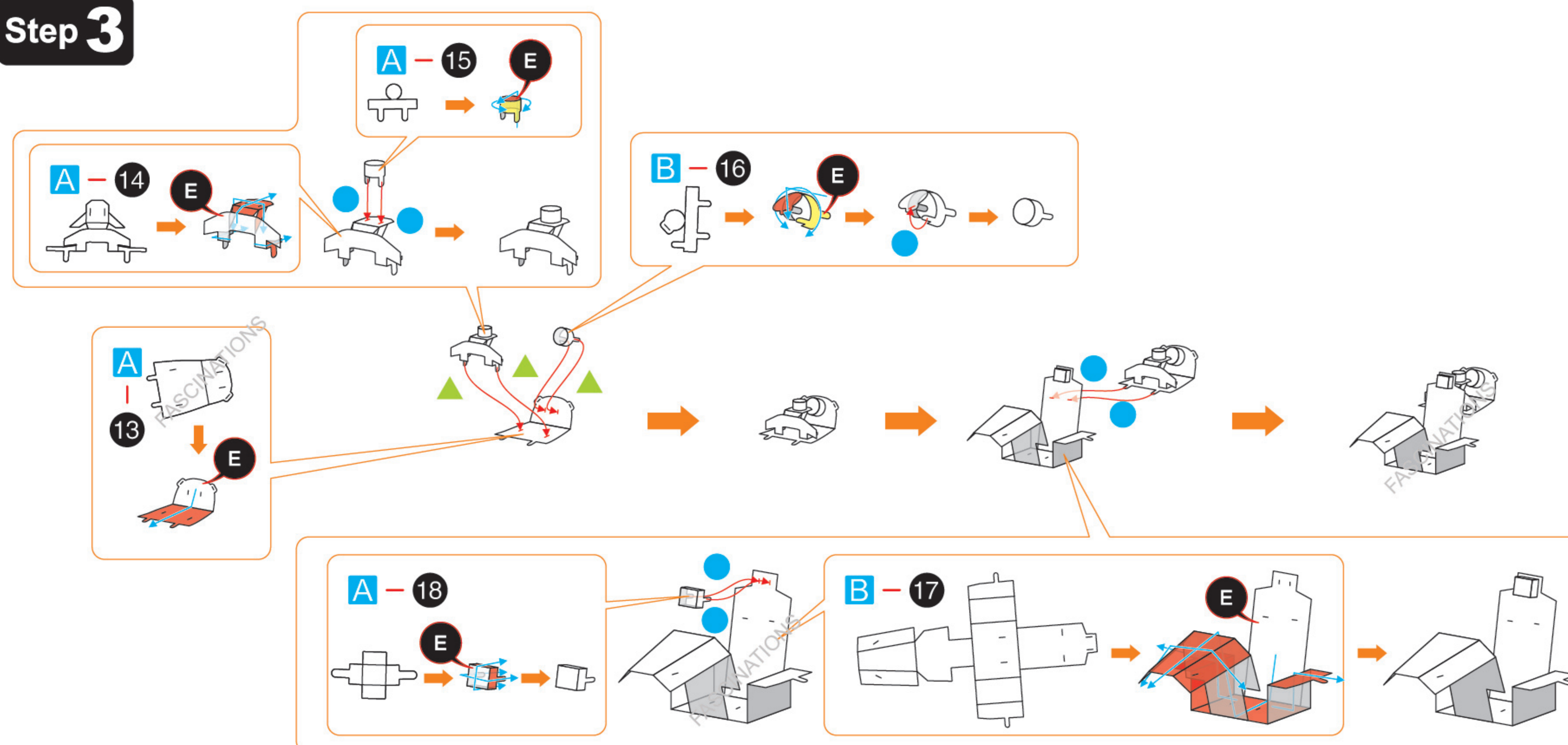
#### Step 1



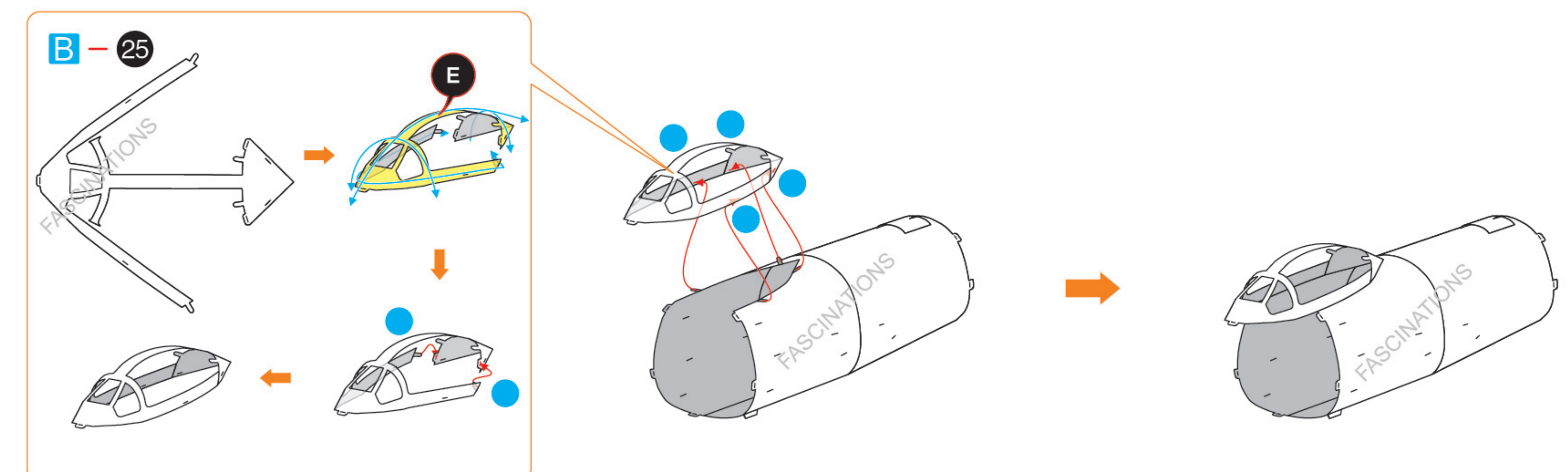
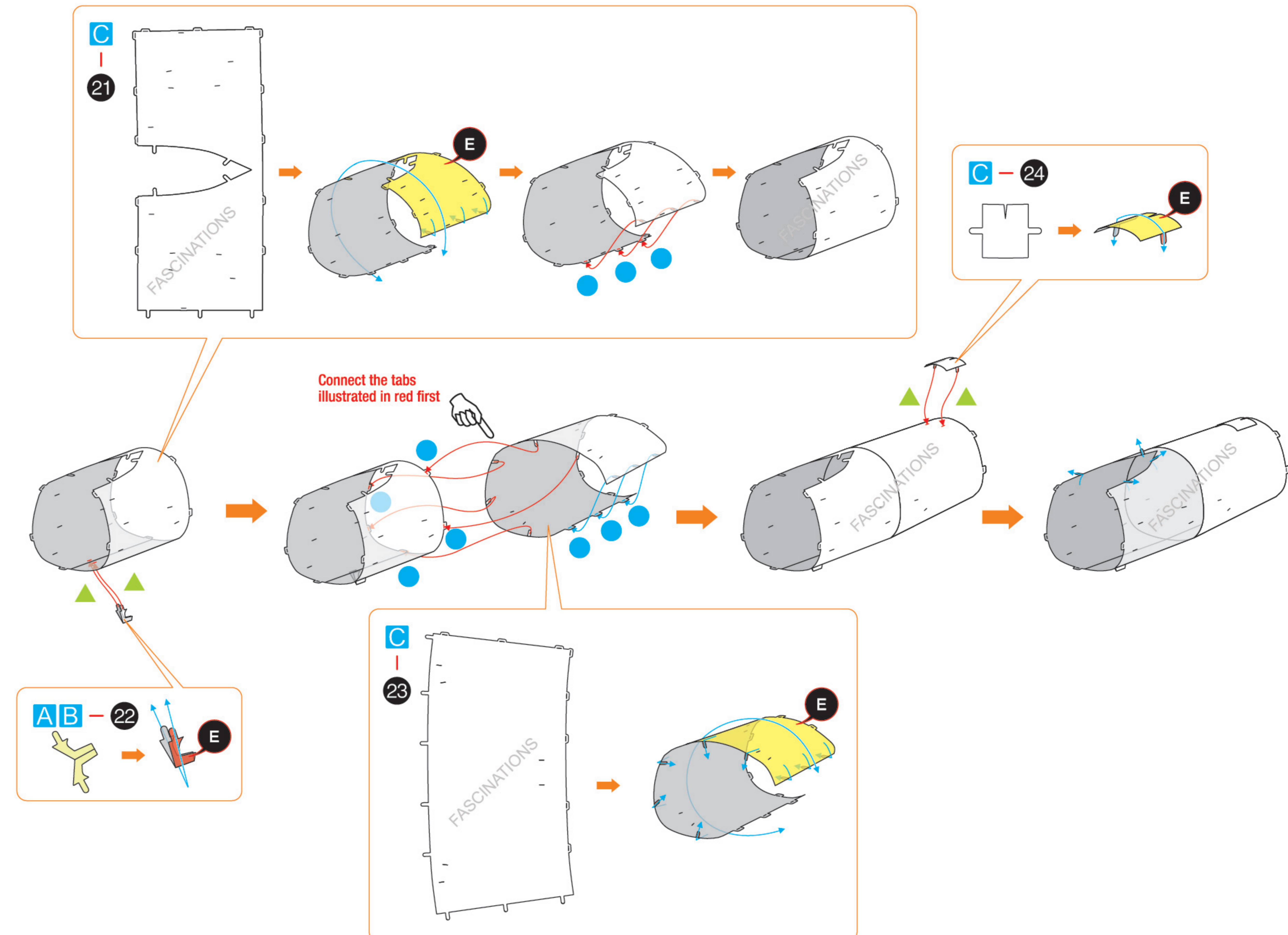
## Step 2

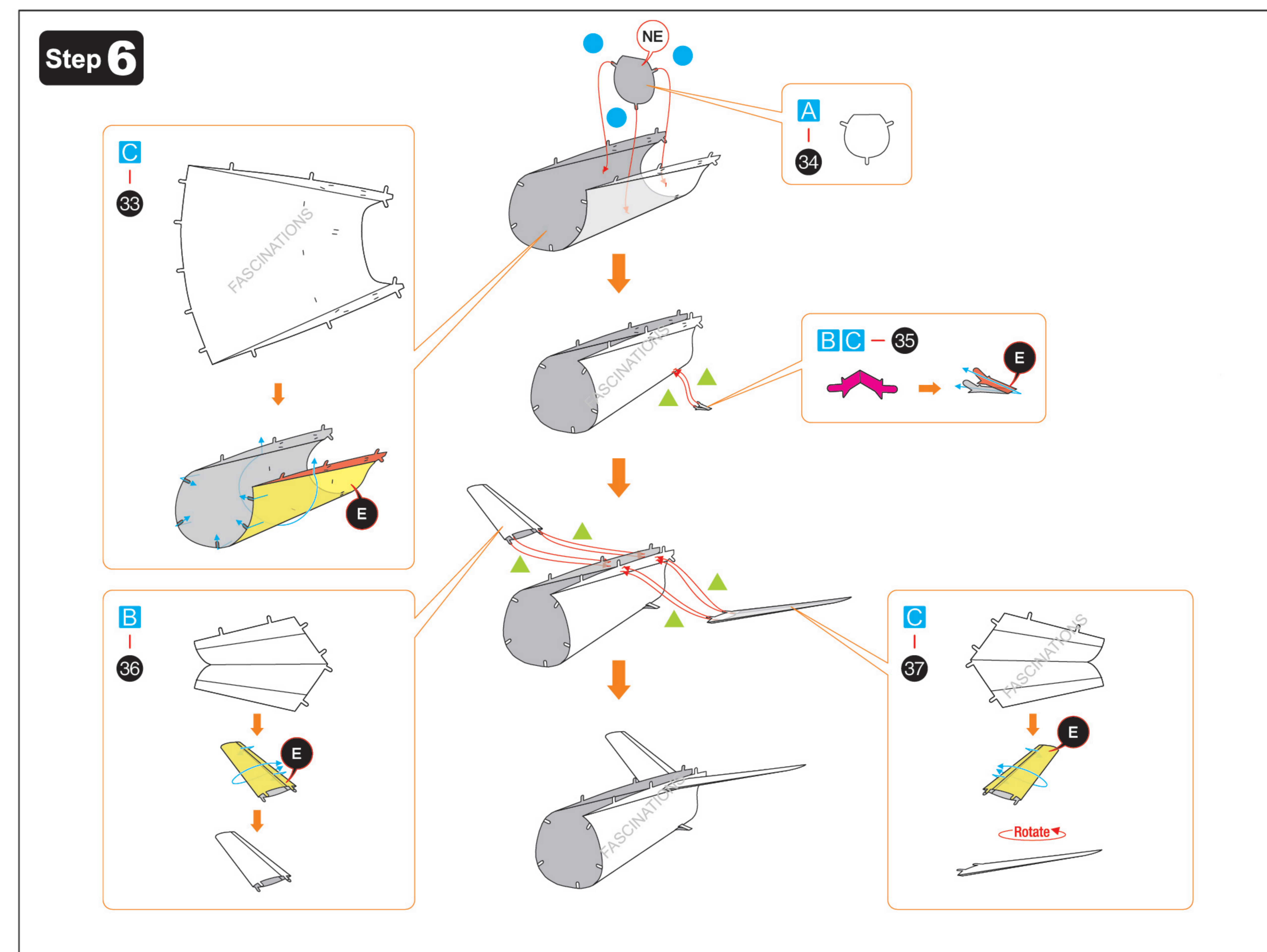
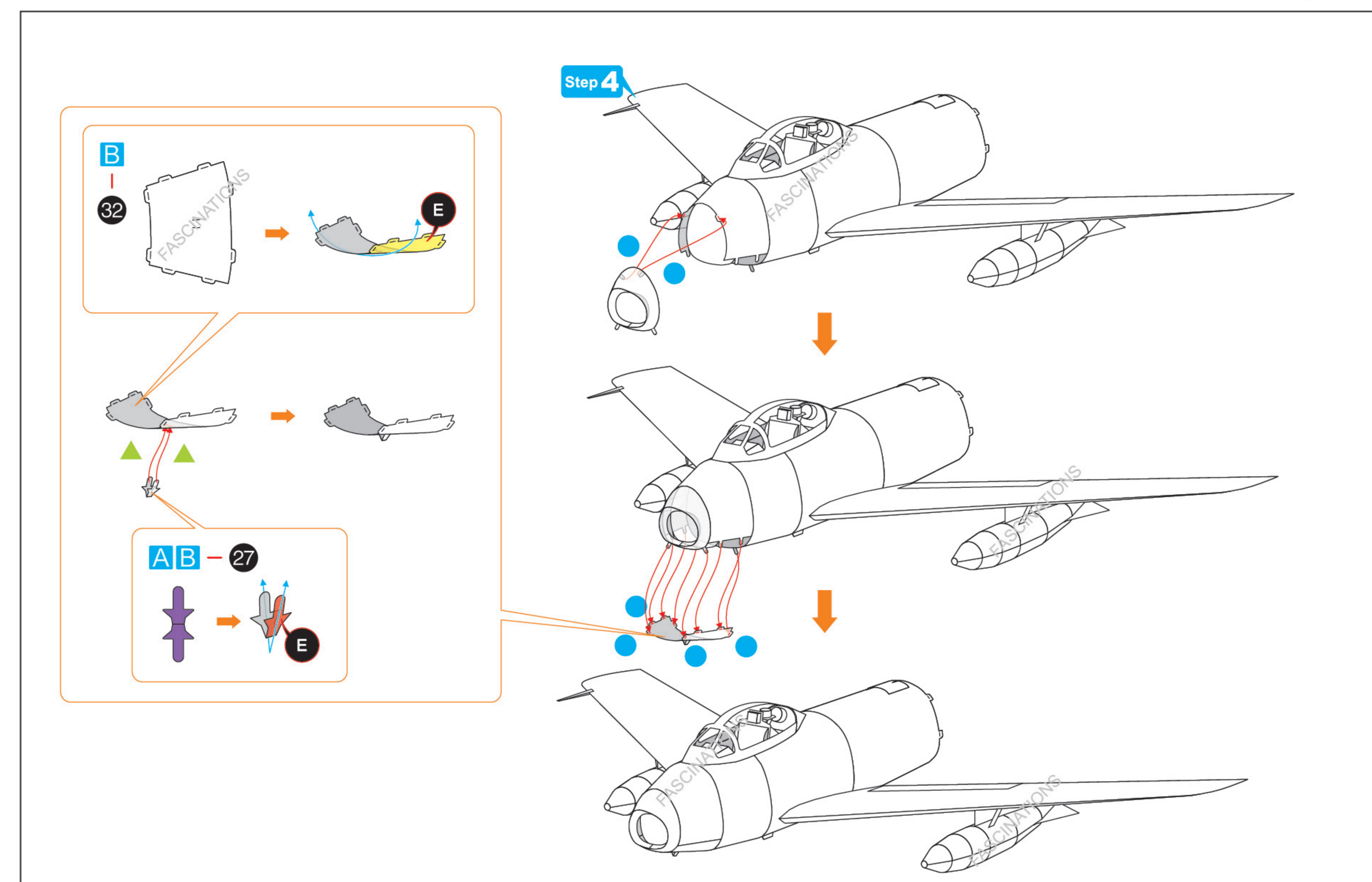
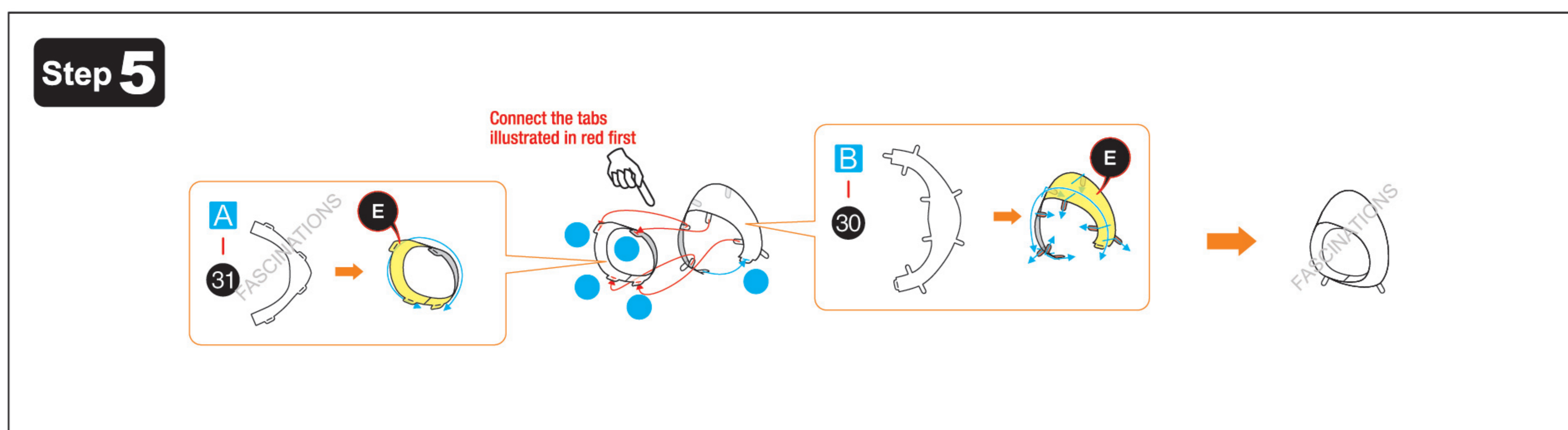
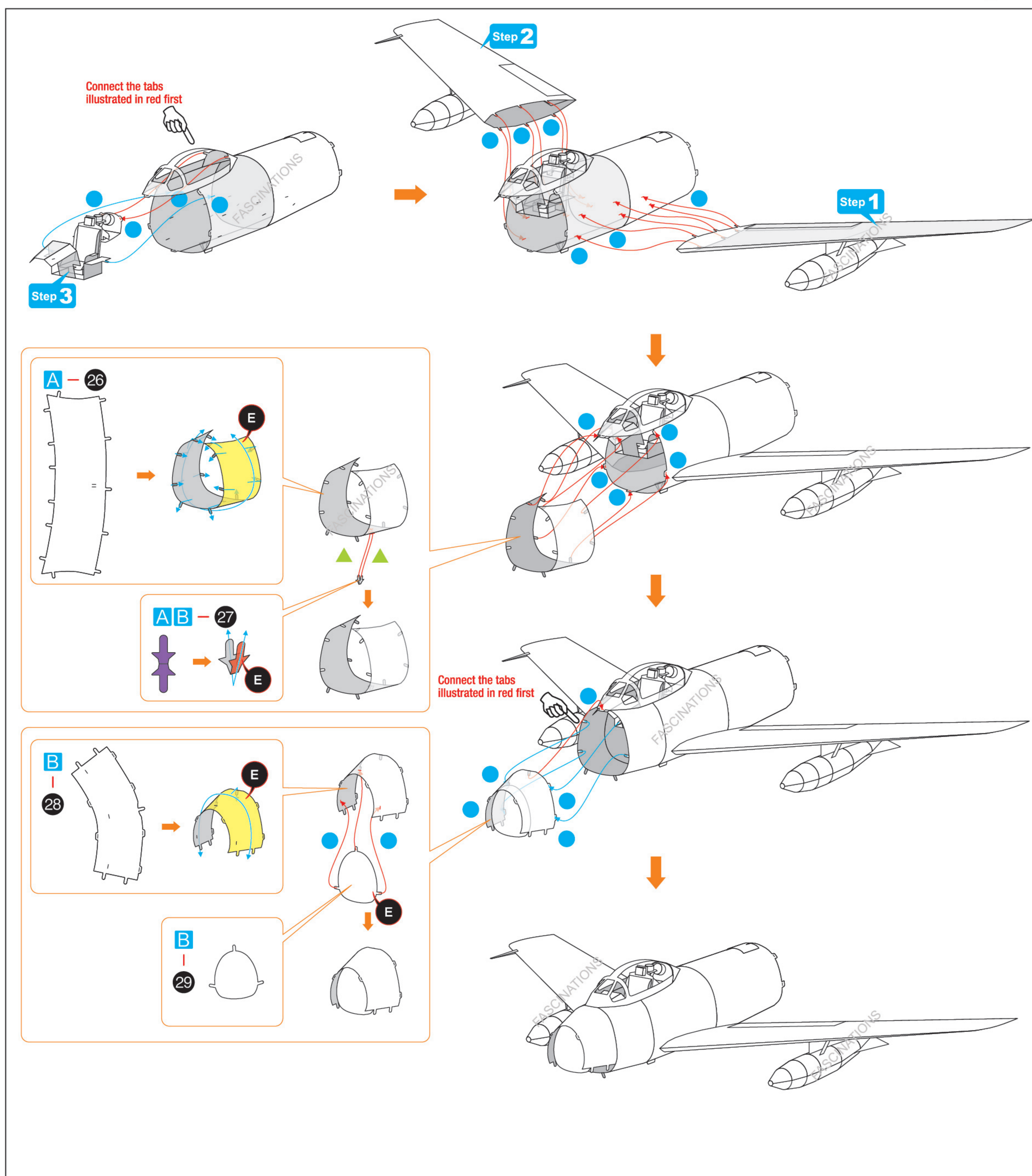


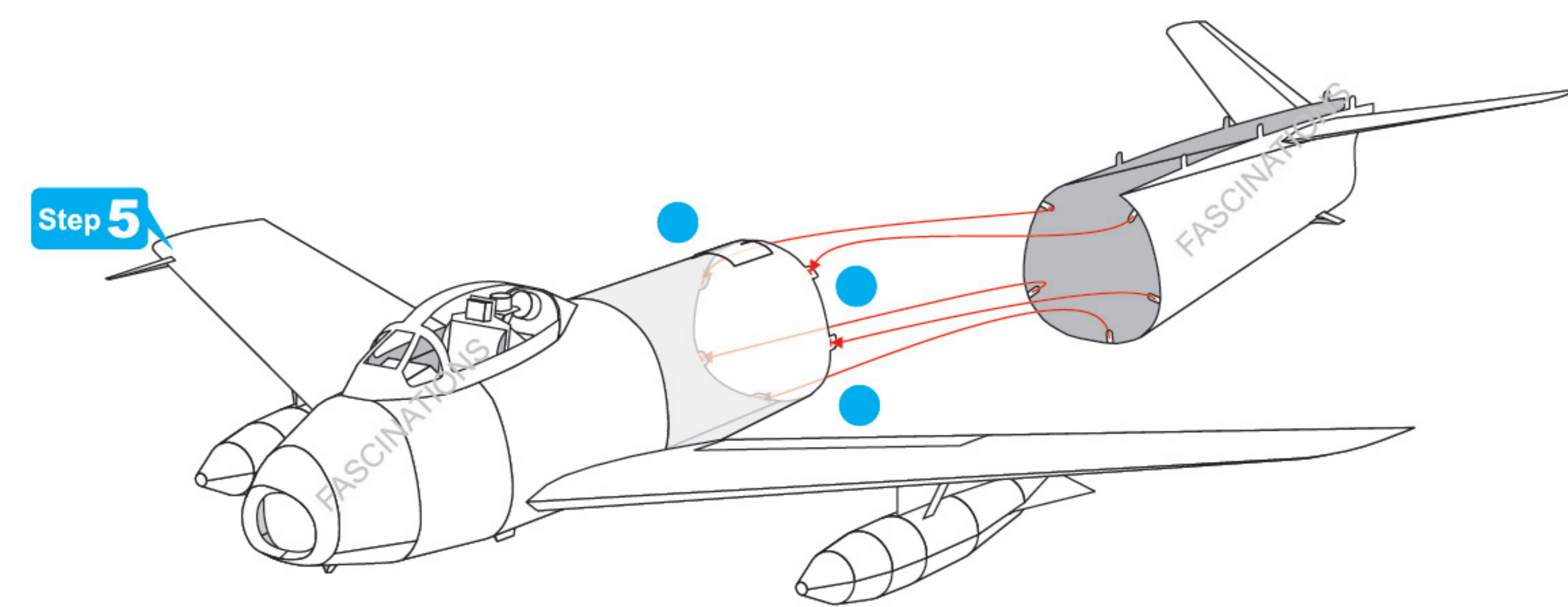
## Step 3



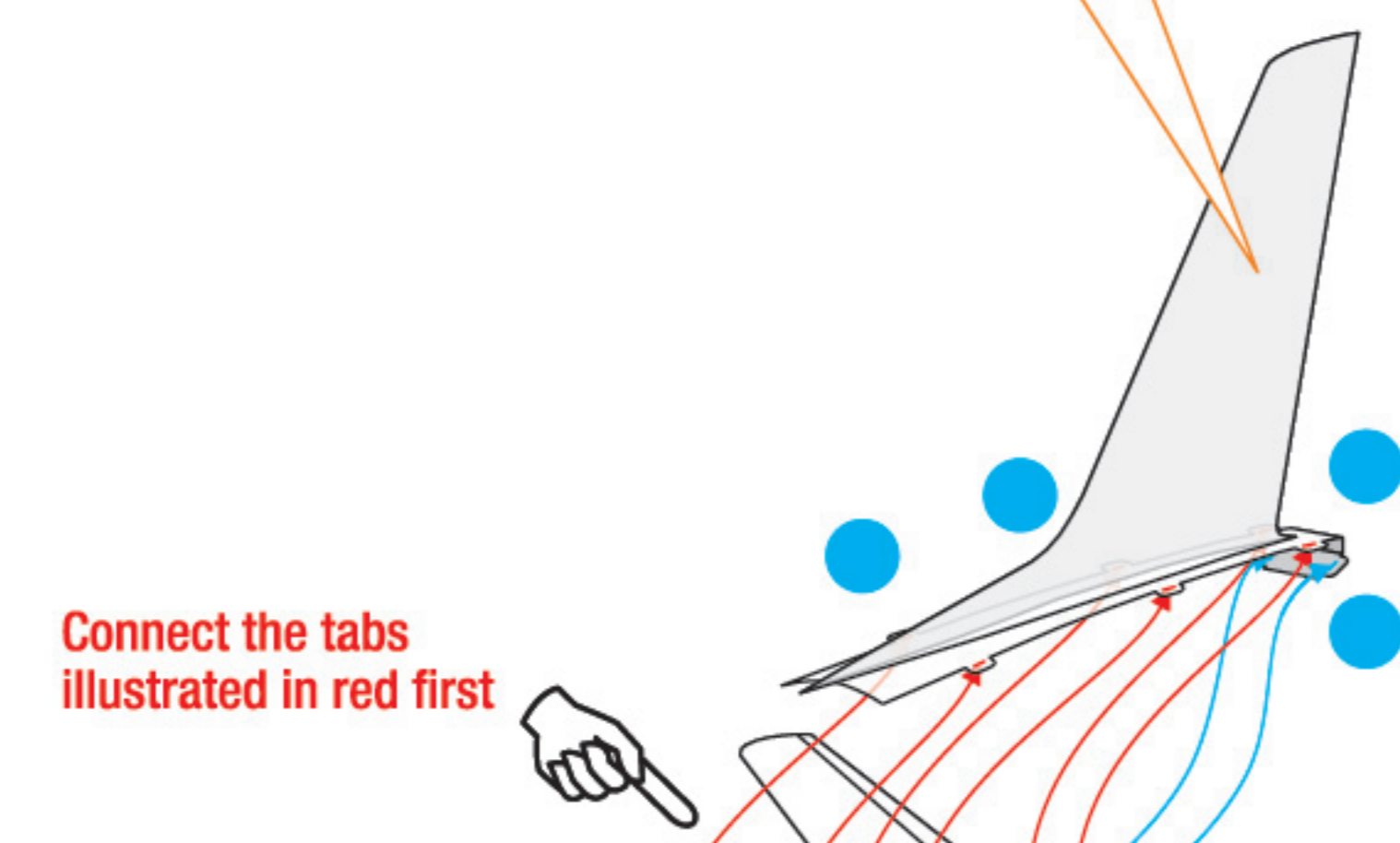
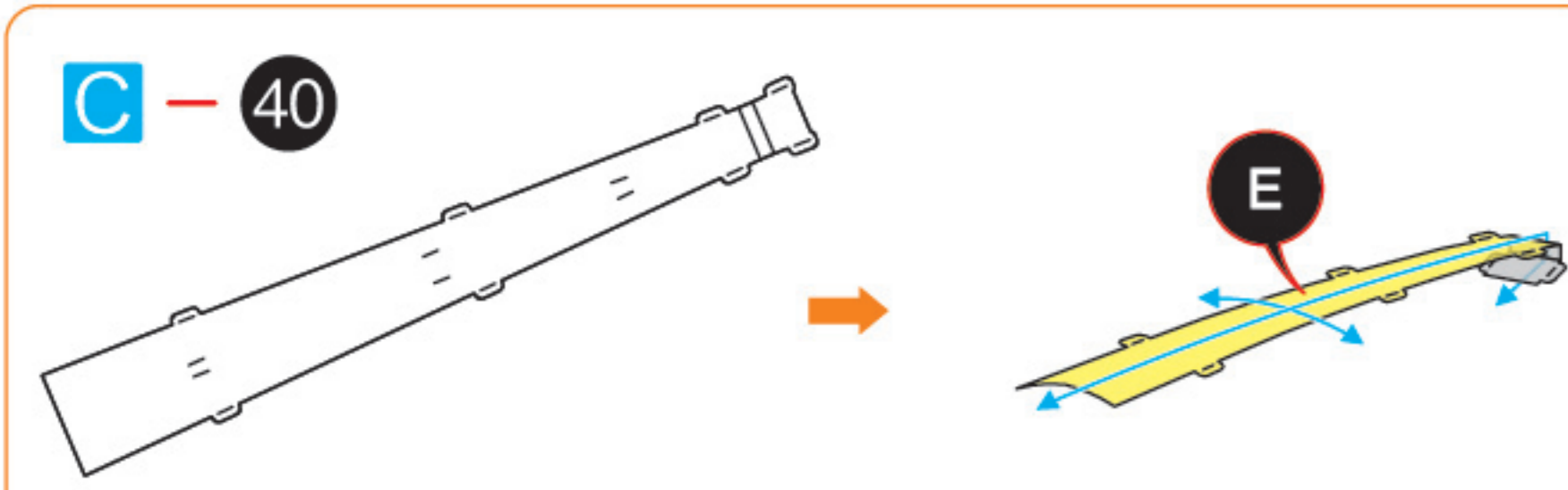
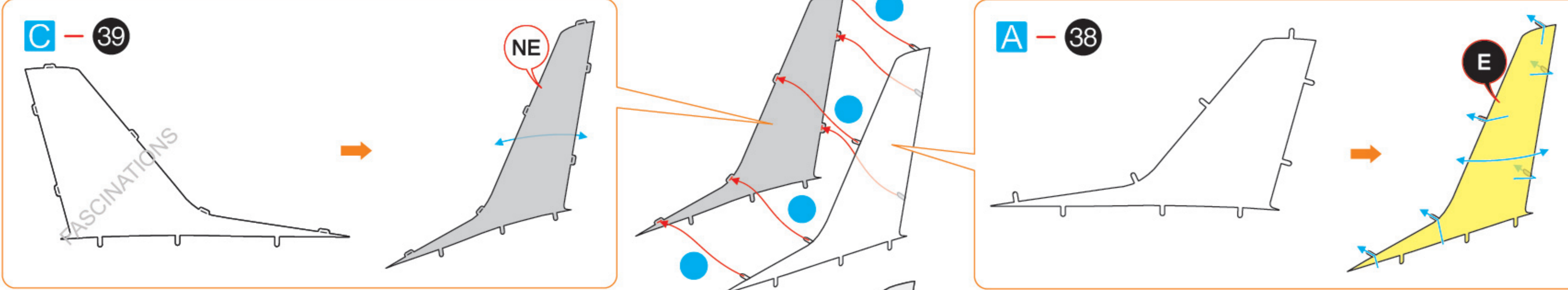
## Step 4



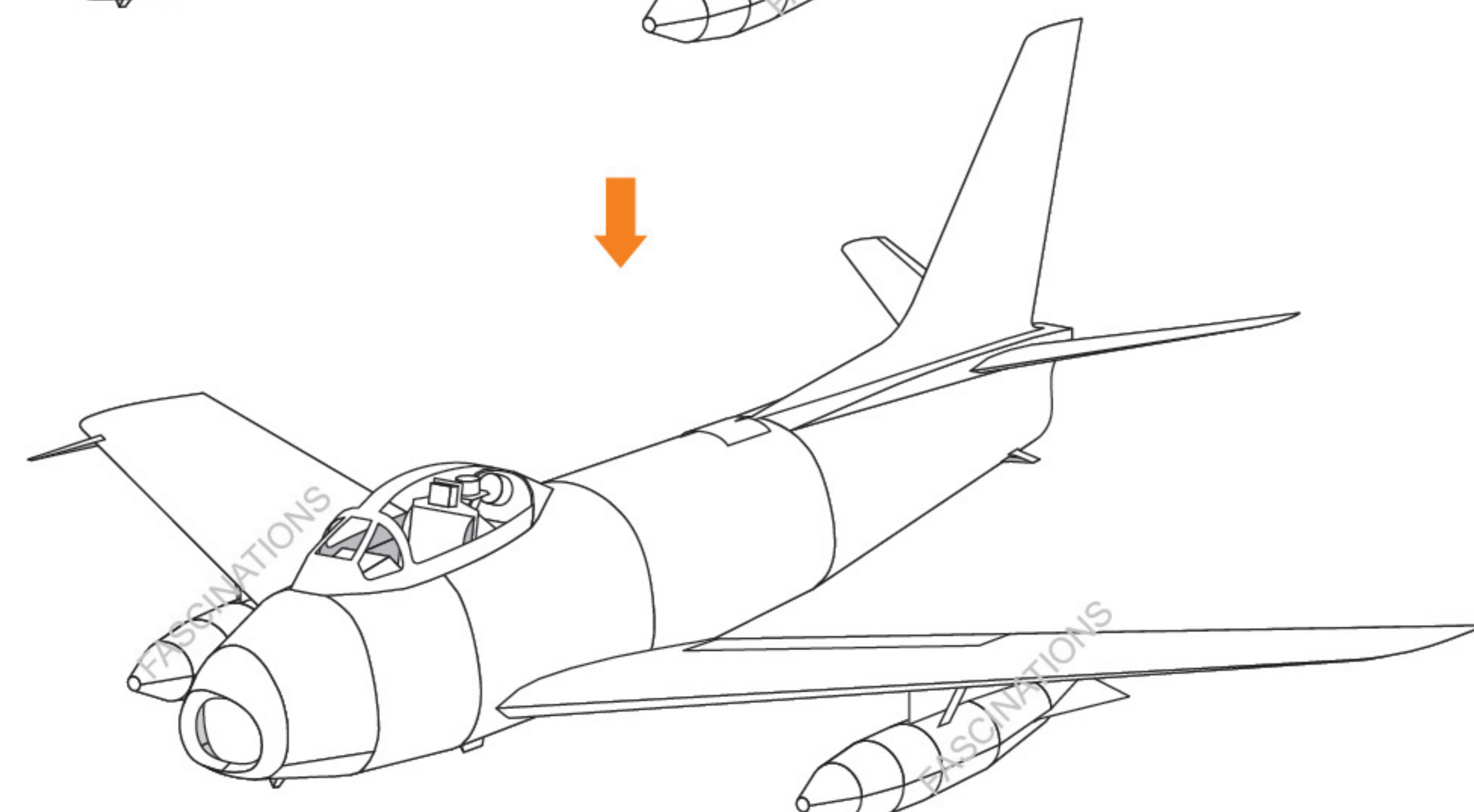
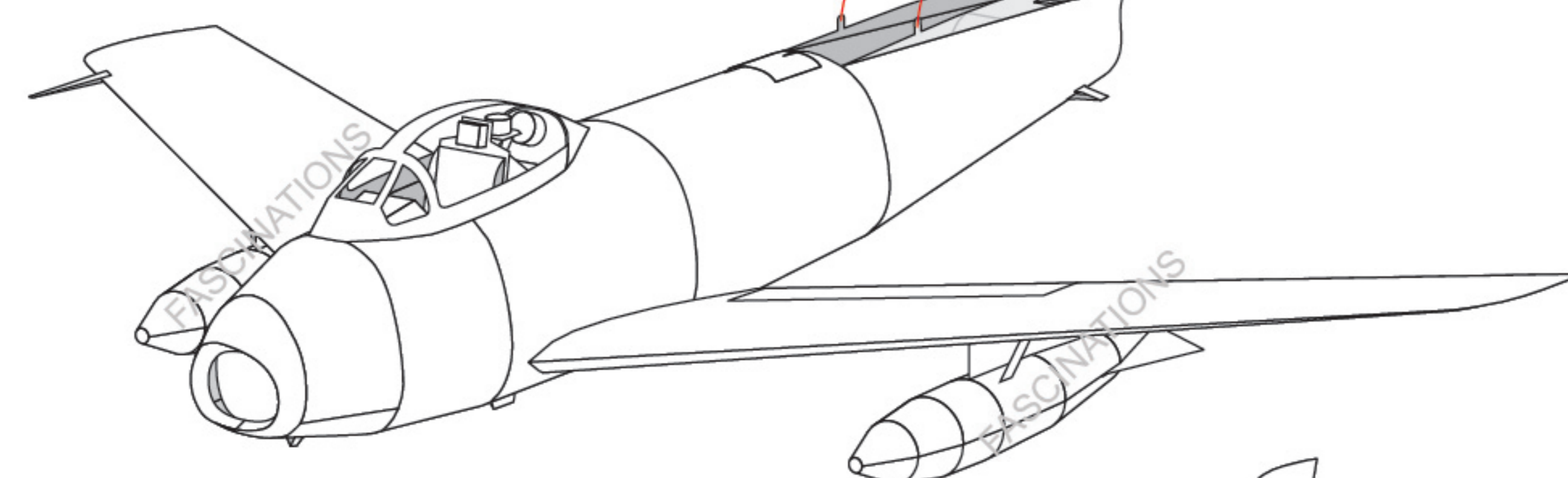




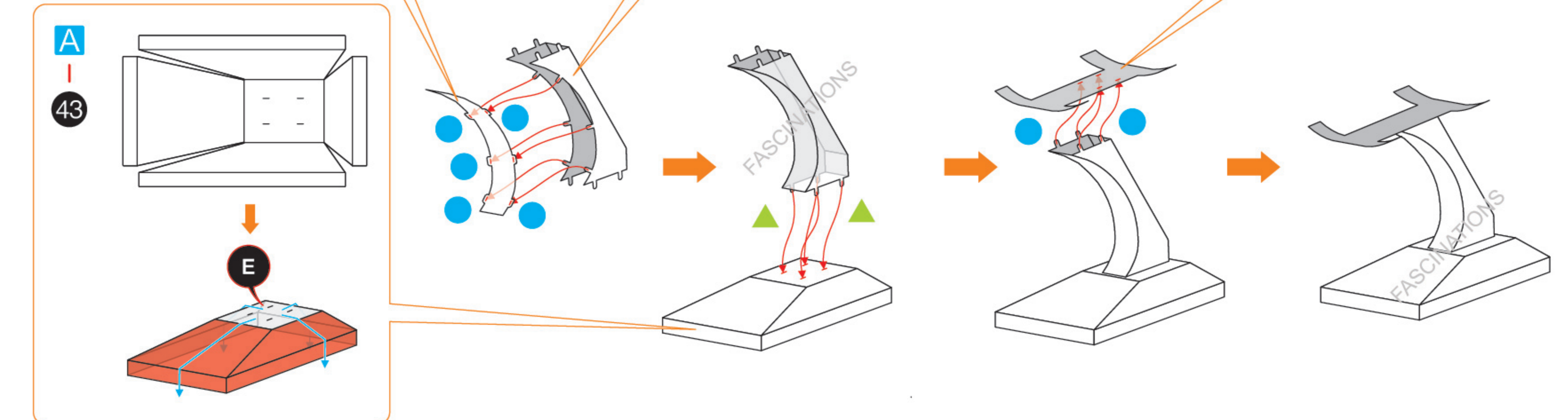
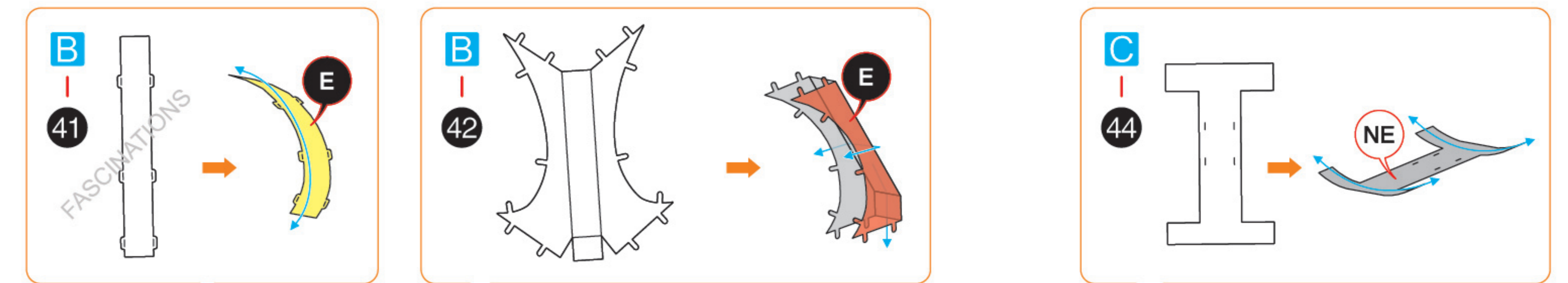
Step 5



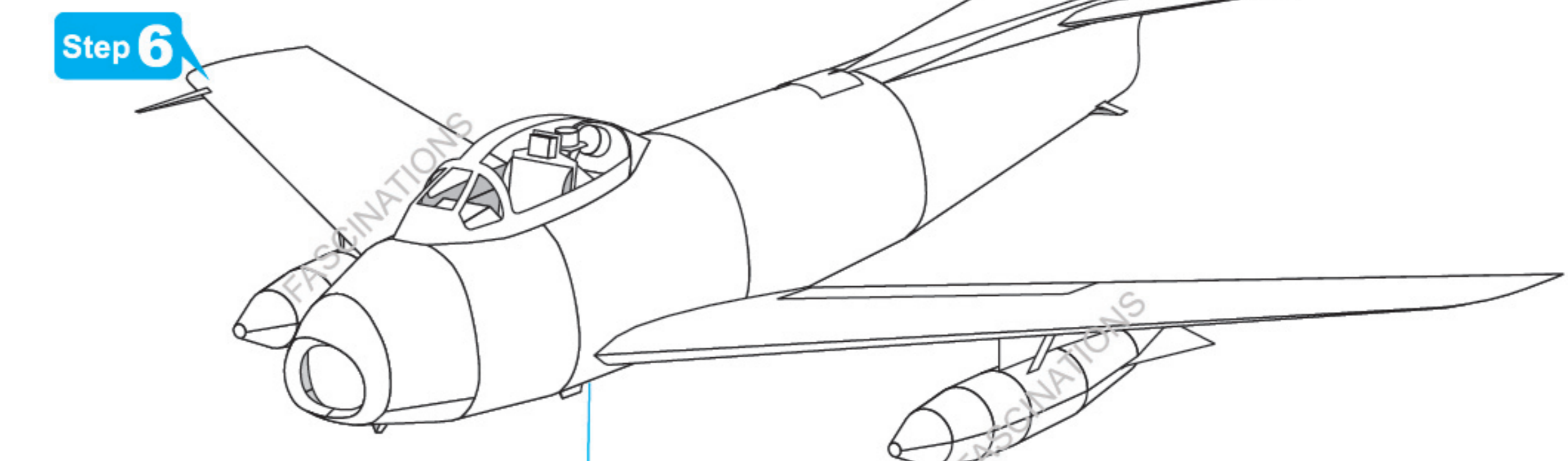
Connect the tabs  
illustrated in red first



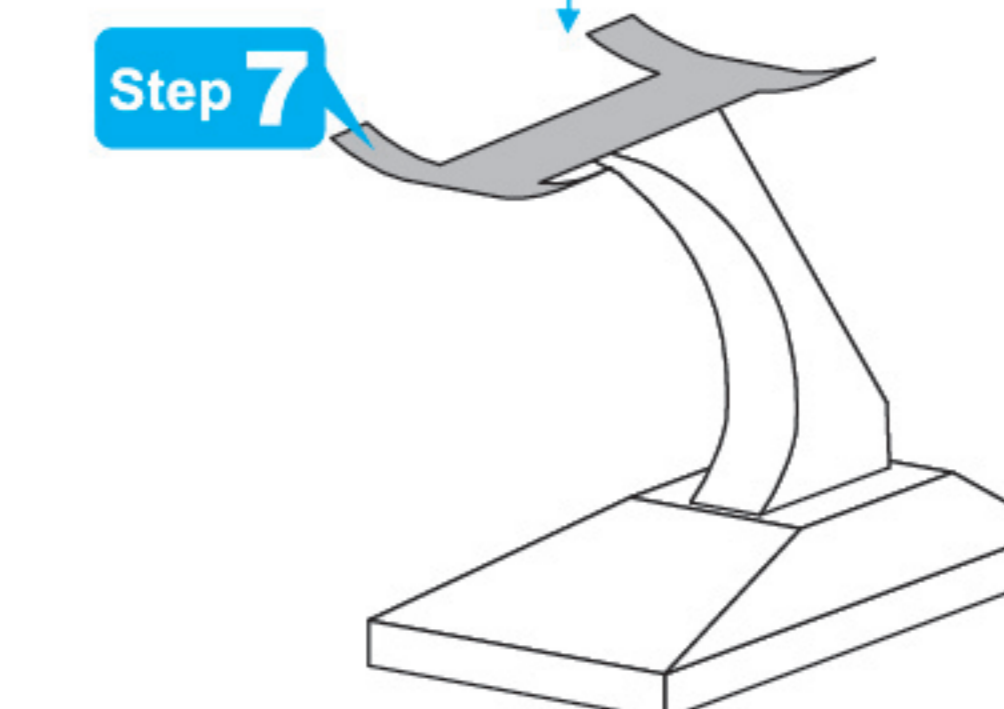
Step 7



Step 8



Step 6



Step 7

