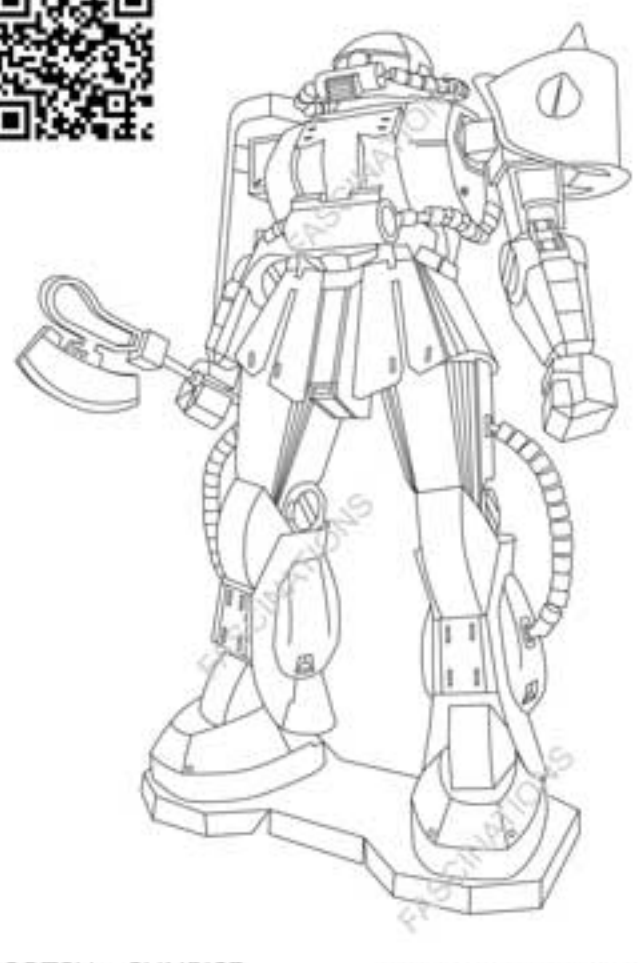




It is highly recommended that you visit www.metal-earth.com/360/icx102 to see the completed model before assembling your own

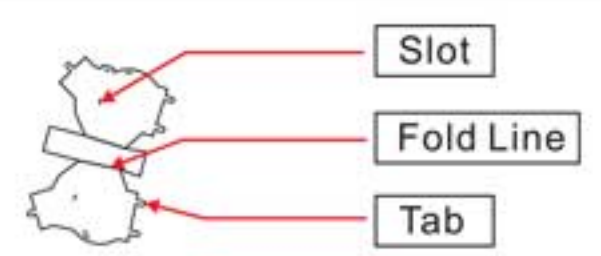
Go to www.metal-earth.com/360/icx102 to see the zoomable PDF version of this instruction sheet

ICX102 MS-06 ZAKU II



©SOTSU · SUNRISE PLEX 2017 MADE IN CHINA

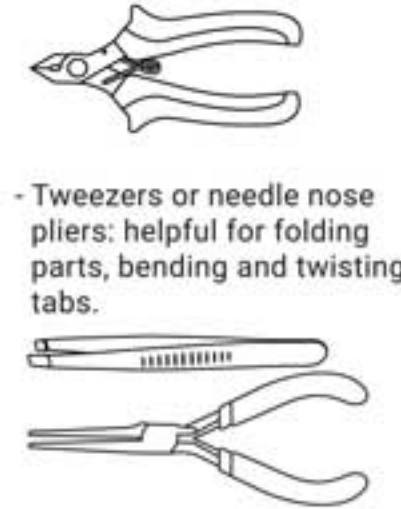
TO CREATE THE BEST CONNECTIONS



- Legends:**
- E Engraved side
 - NE Non-engraved side
 - Attention point
 - Insert tab and bend 90 degrees
 - Insert tab and twist 90 degrees

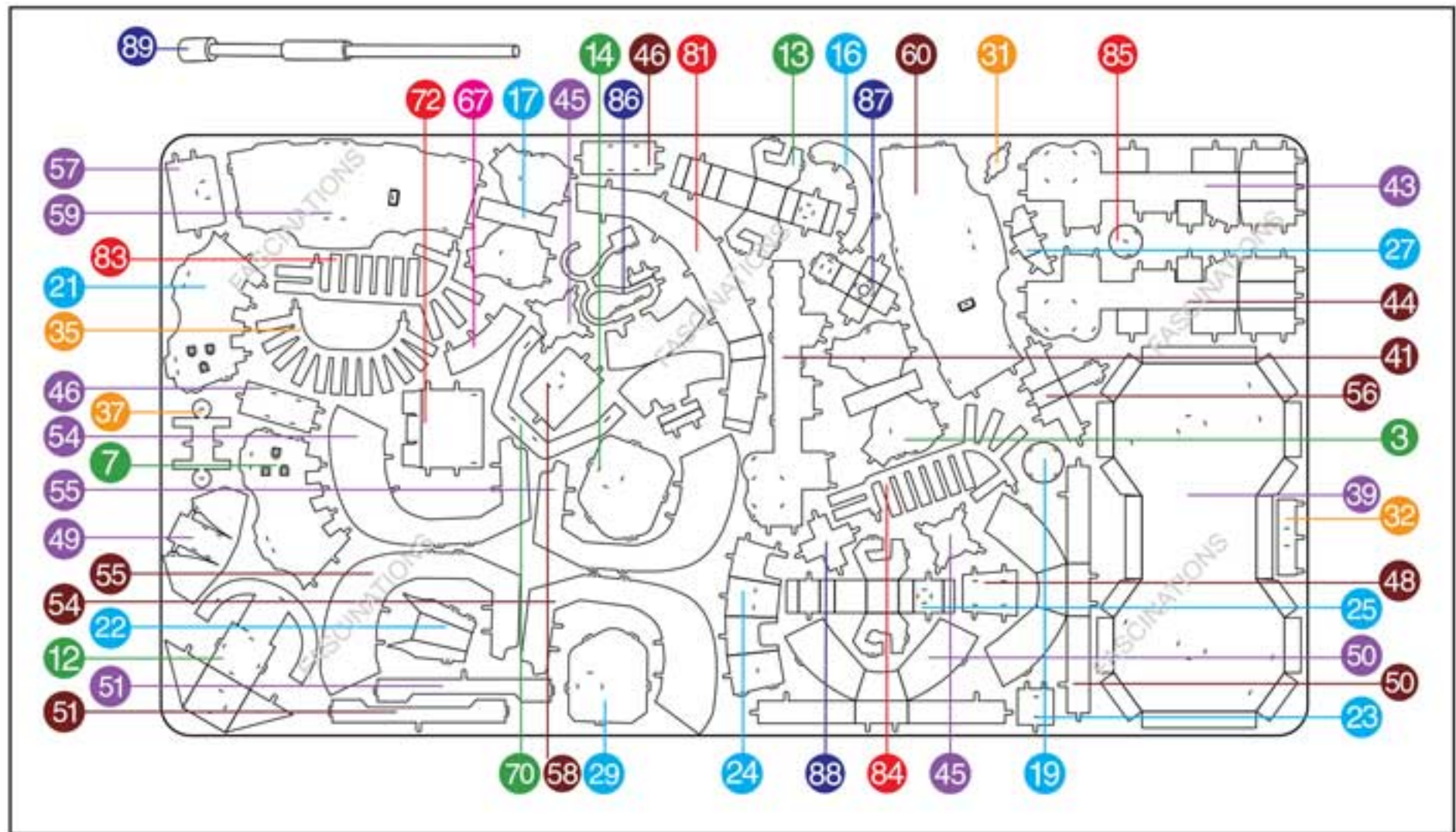
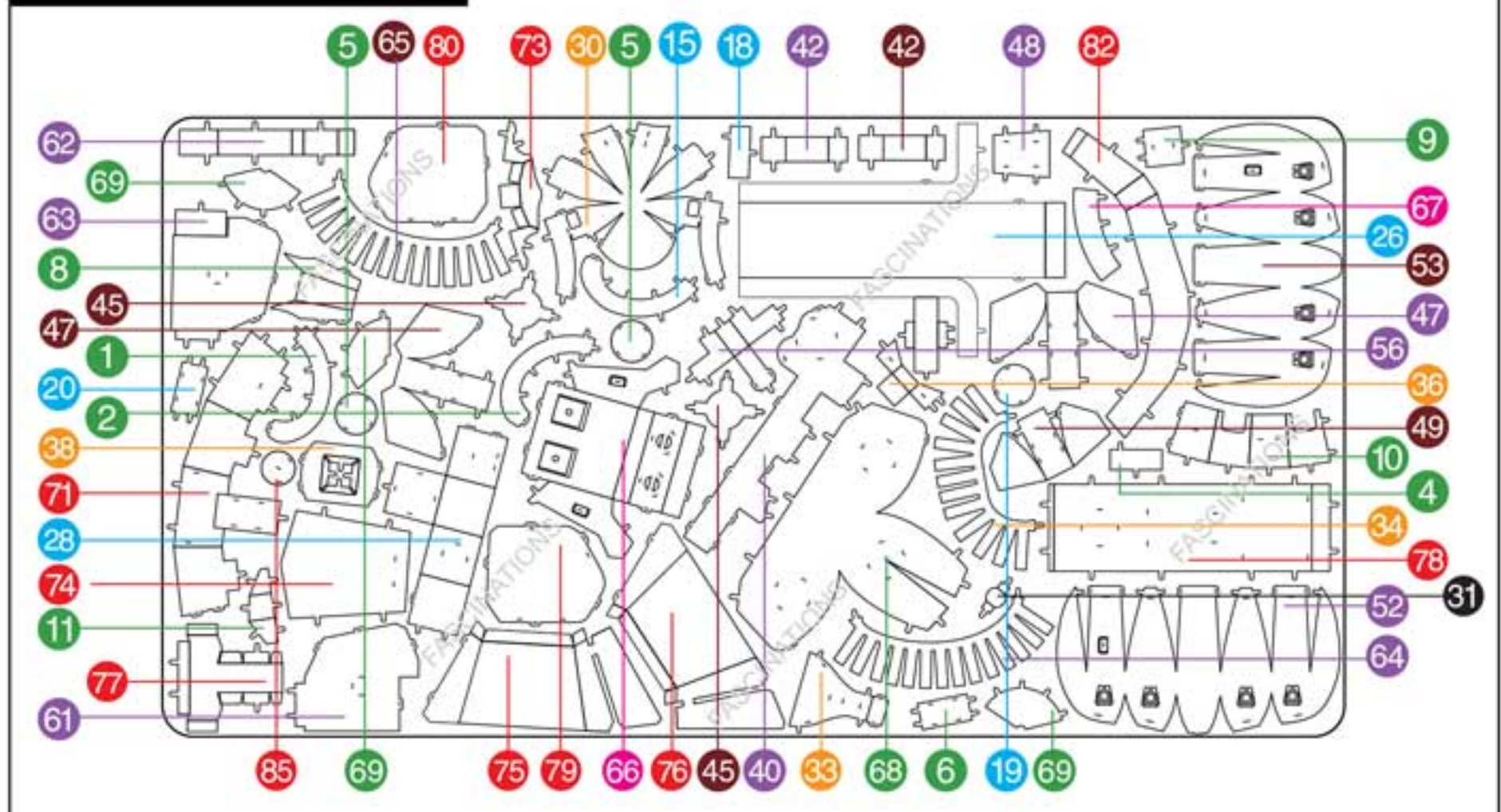
Recommended tools:

- Wire cutters: helpful for taking parts from the metal sheets.
- Tweezers or needle nose pliers: helpful for folding parts, bending and twisting tabs.



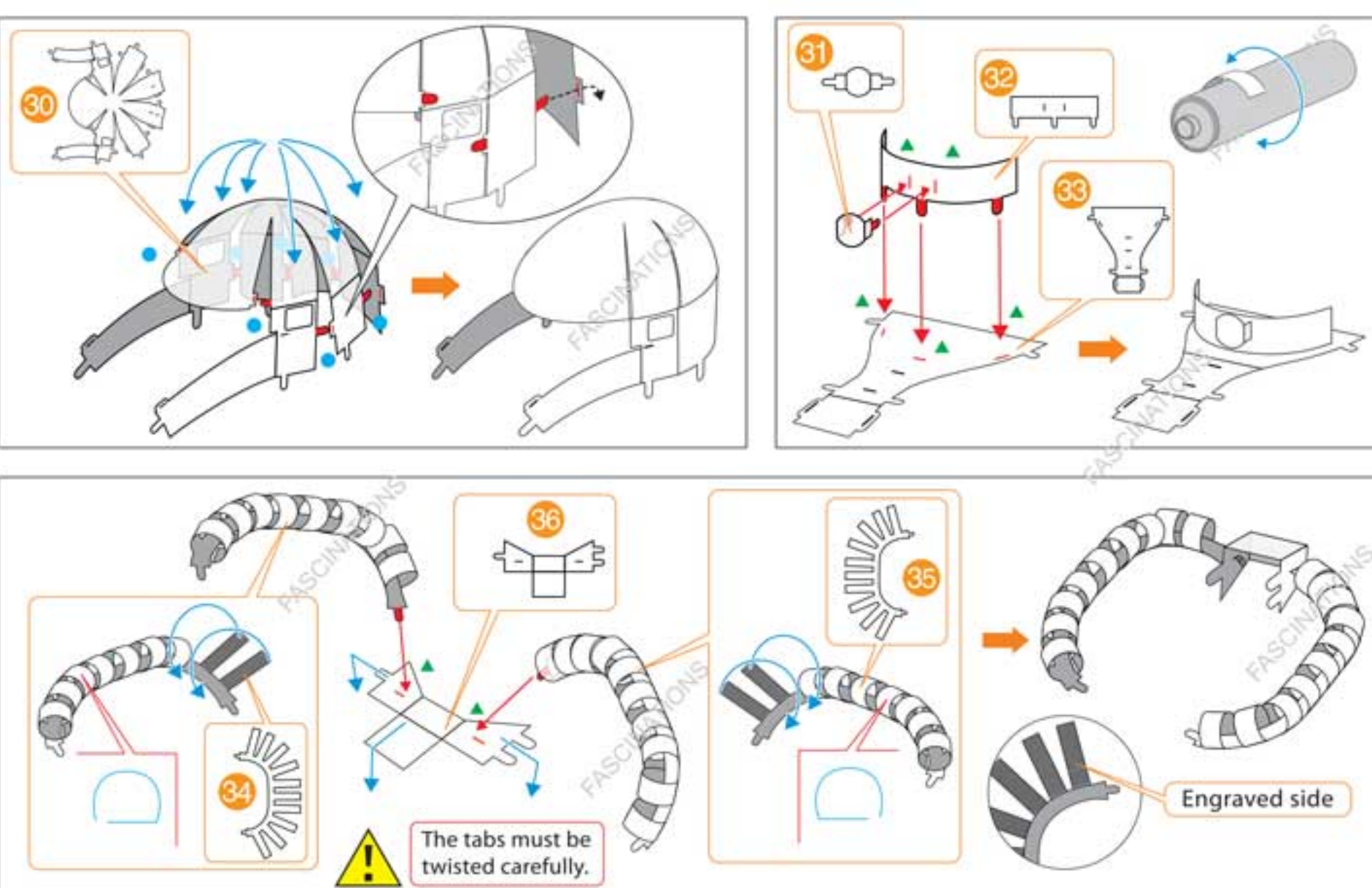
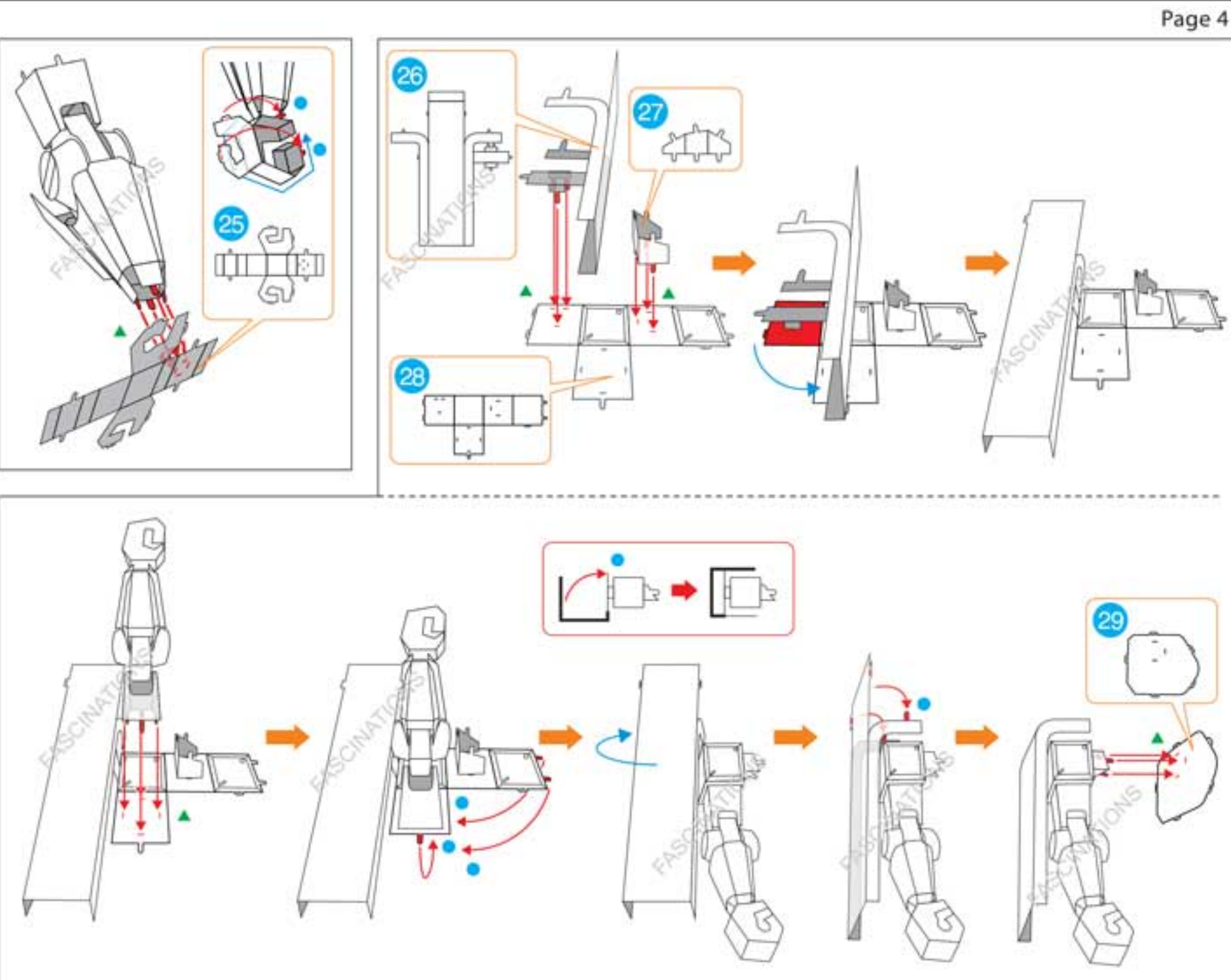
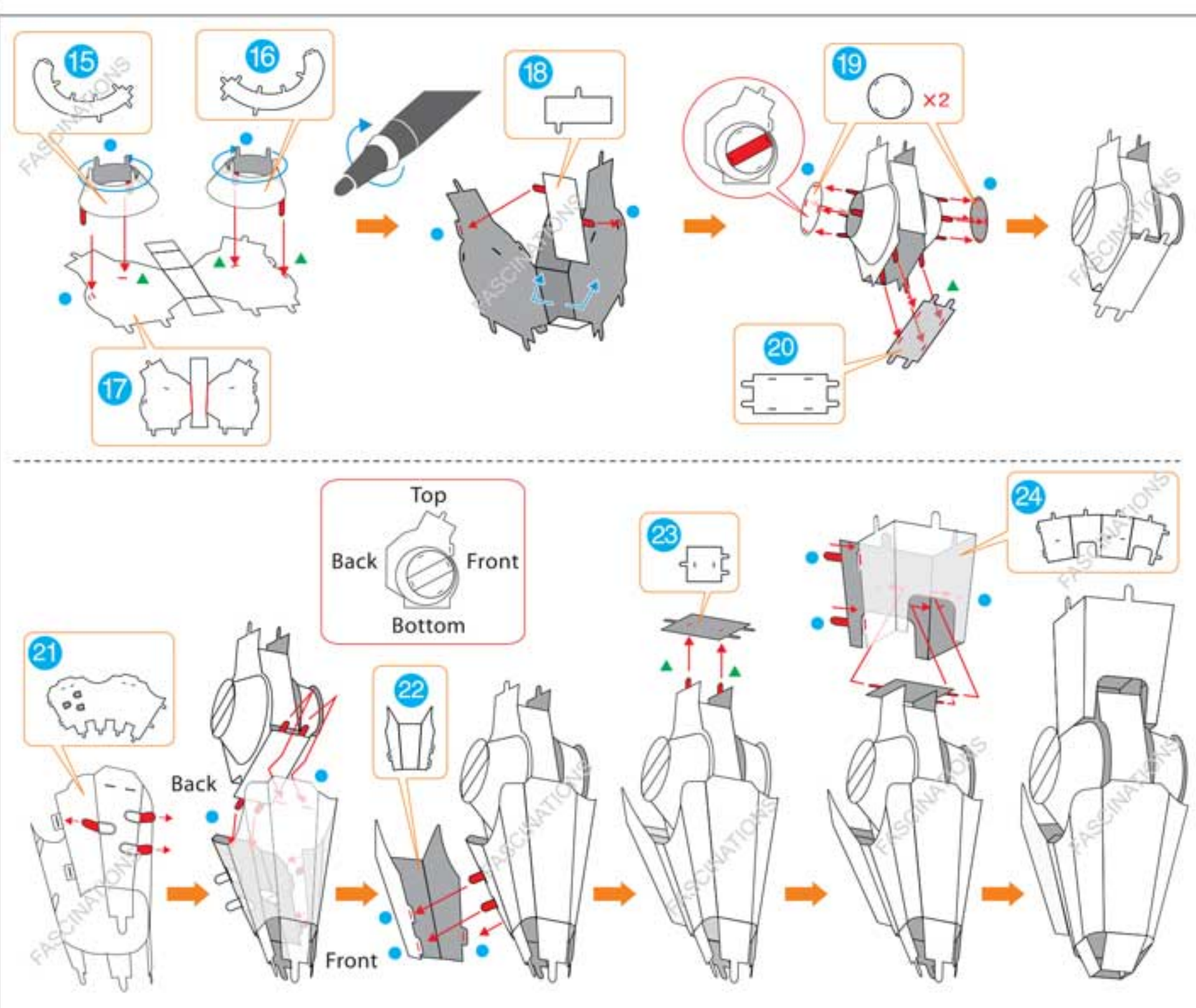
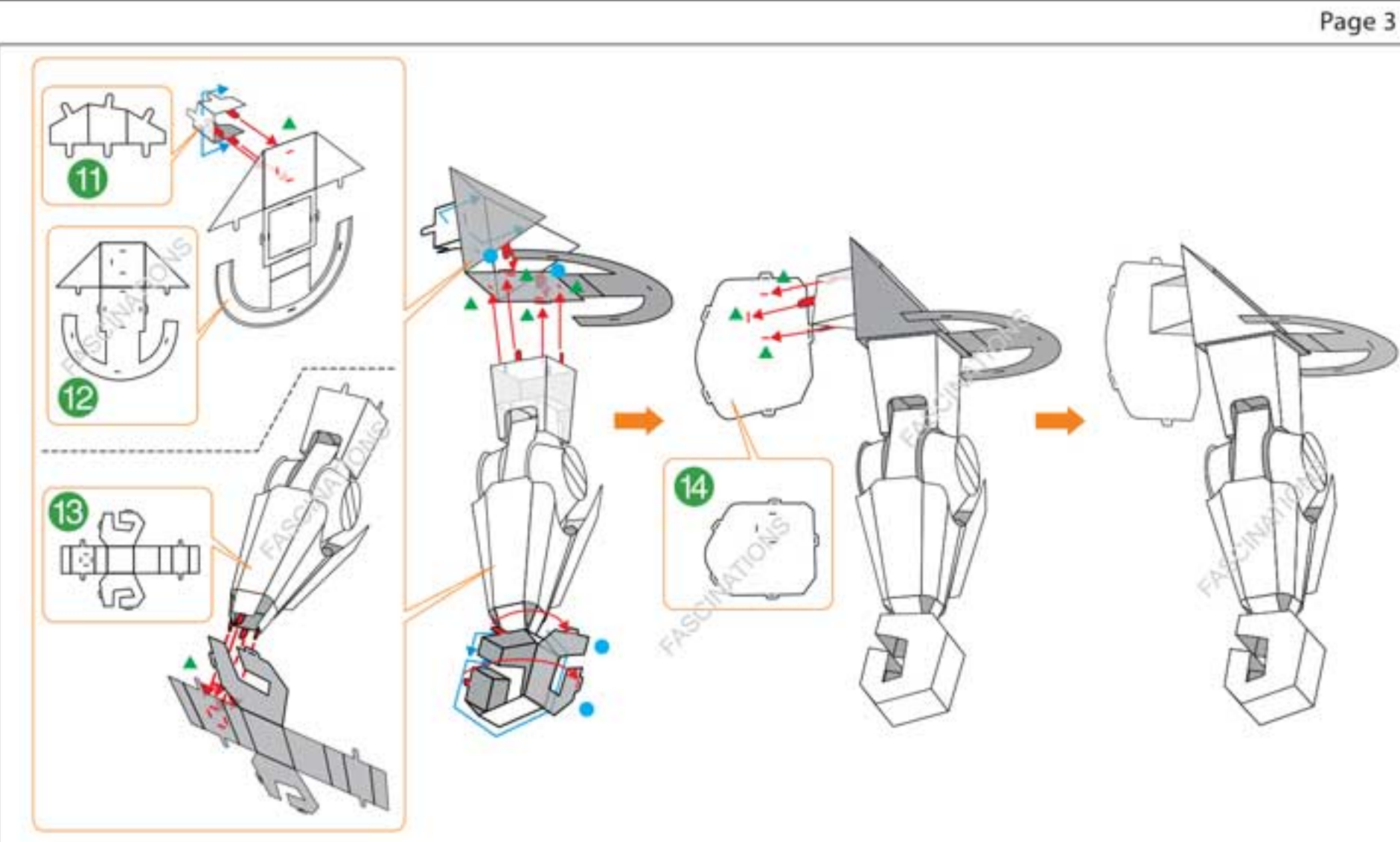
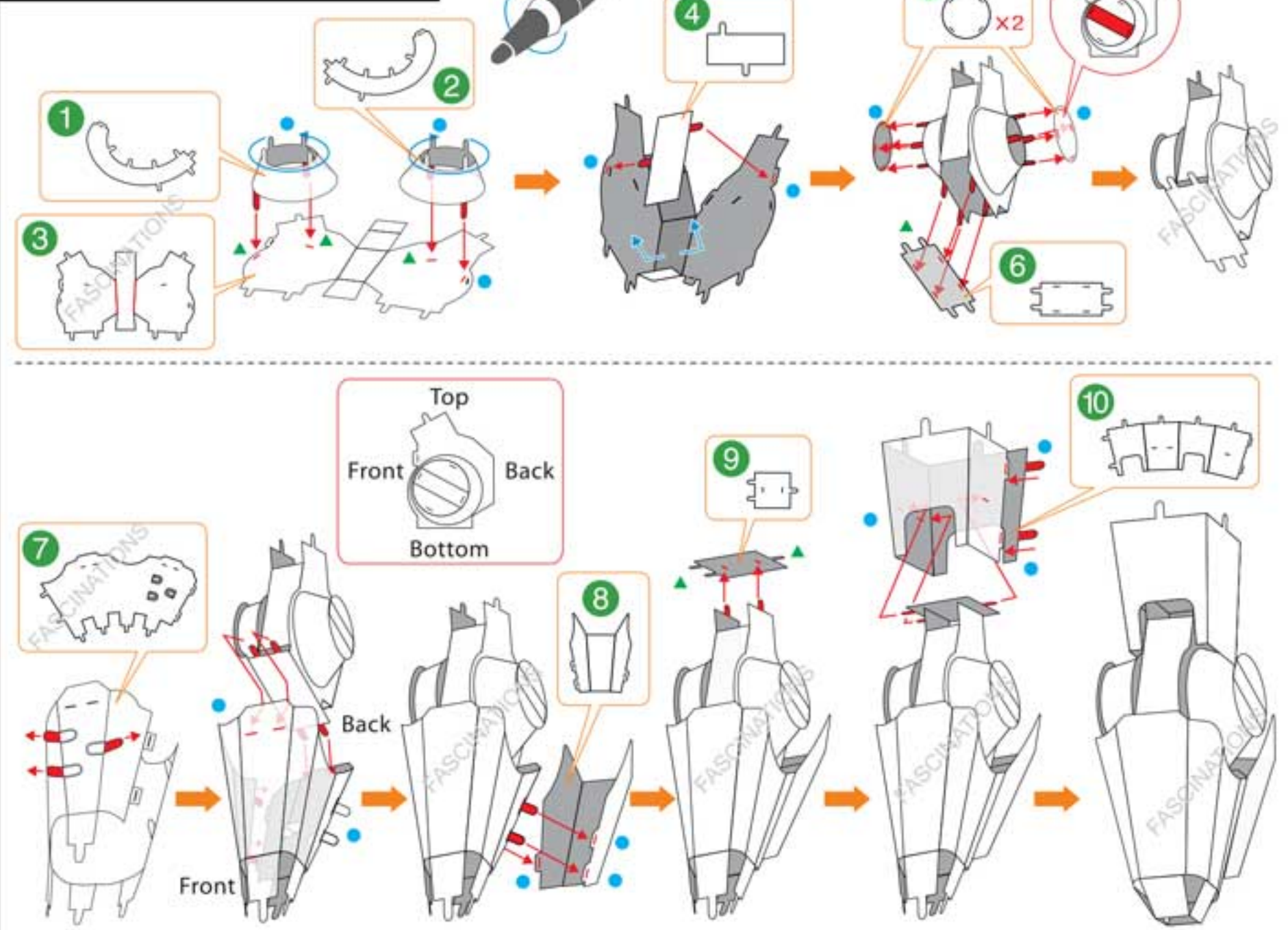
Assembly tip:
If needed, slightly twist tabs to hold parts together then untwist and bend them down for a nice finish.

METAL SHEETS



! In order to avoid possible injury from sharp edges, please carefully discard the metal sheet after parts have been removed.

ASSEMBLY STEPS



! The tabs must be twisted carefully.

Engraved side

