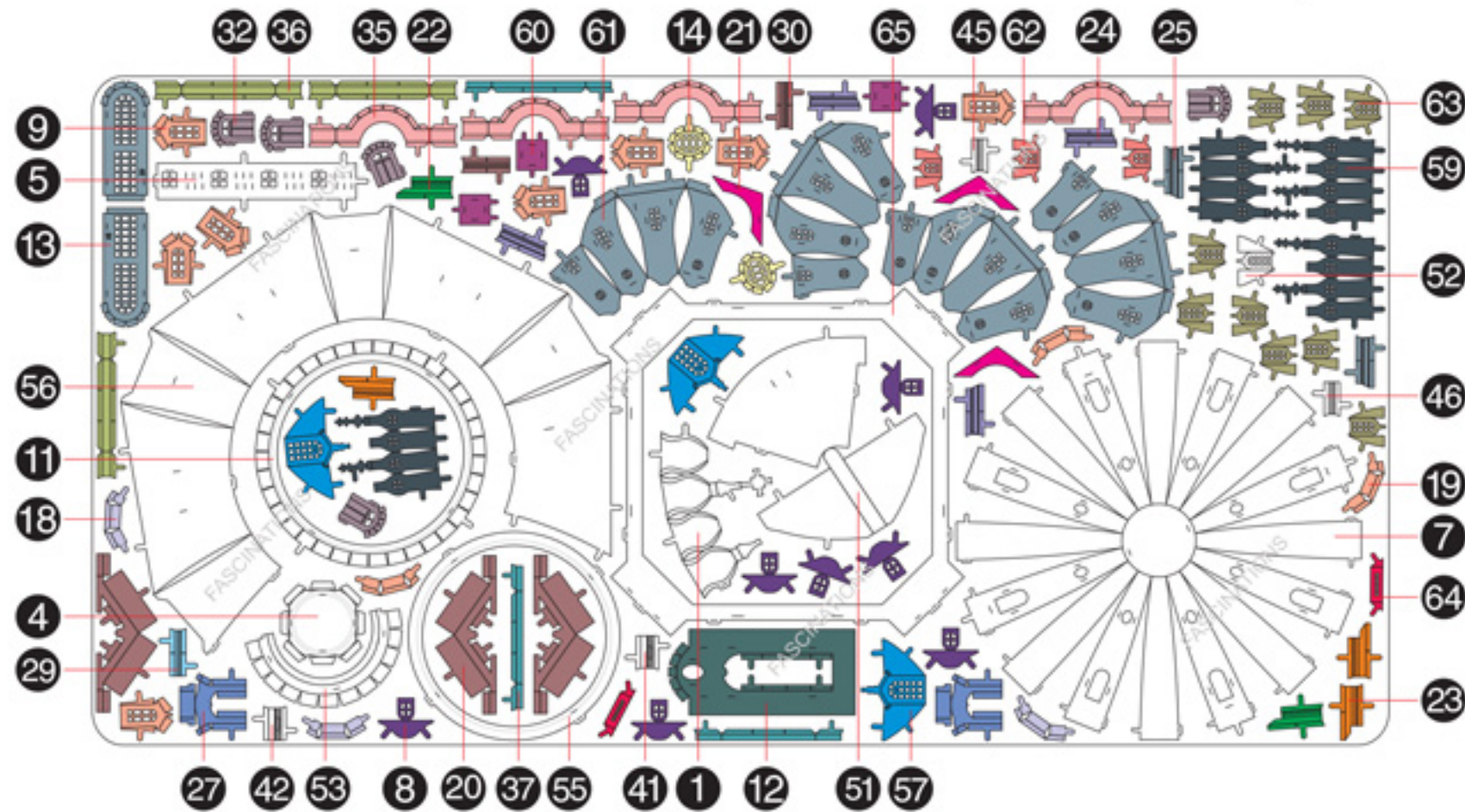




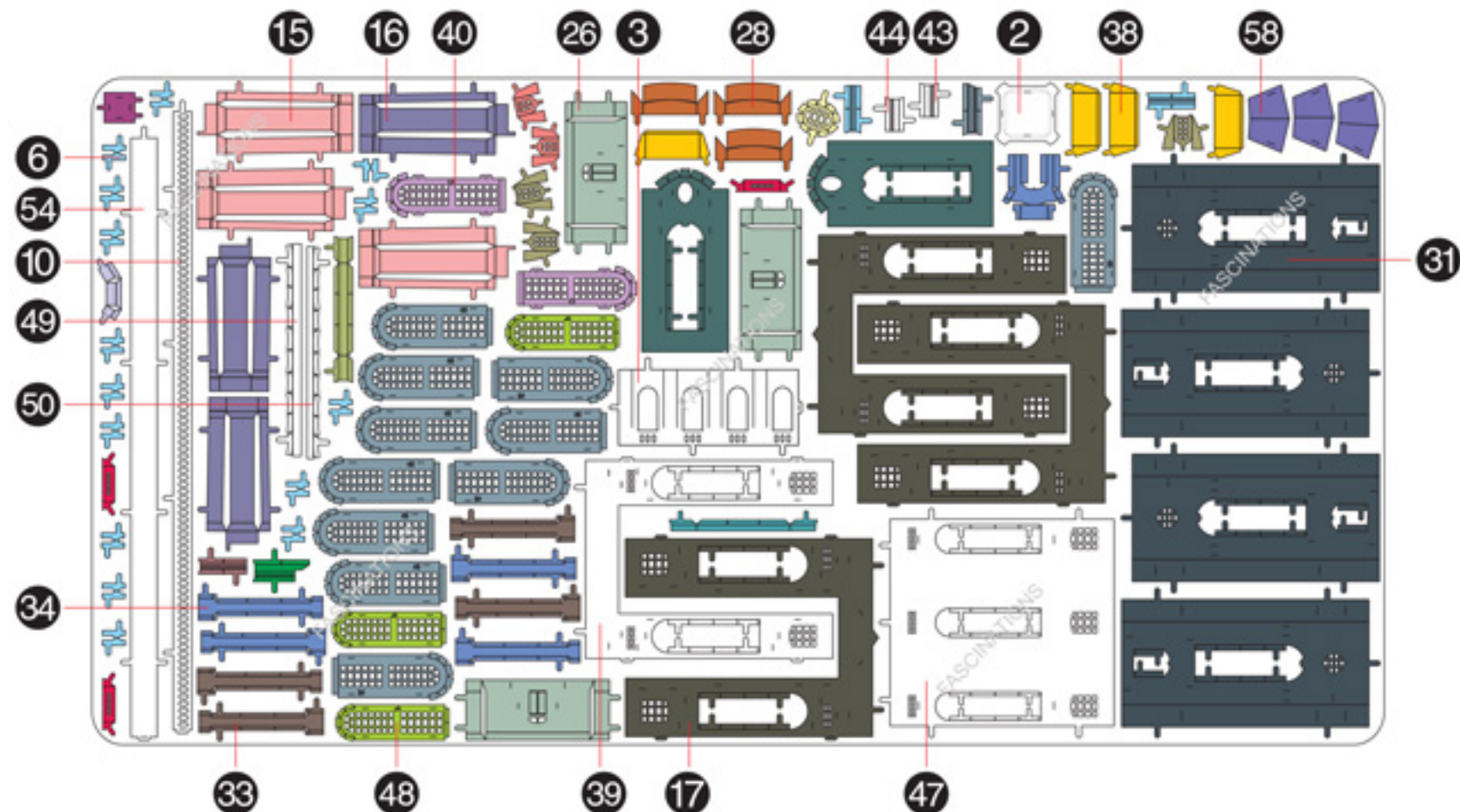
It is highly recommended that you visit
www.metal-earth.com/360/icx119
to see the completed model before assembling your own

METAL SHEET A

Parts that are in the same color are duplicates



METAL SHEET B



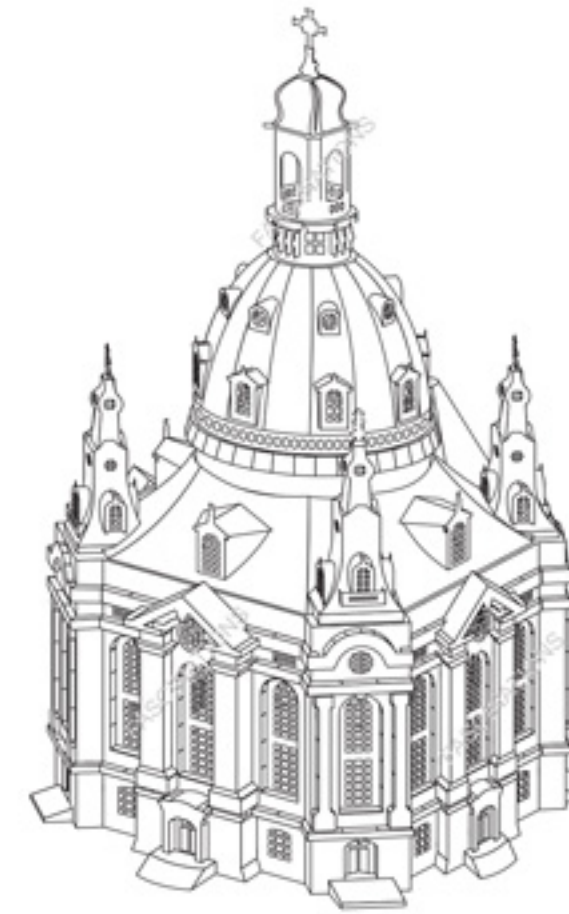
In order to avoid possible injury from sharp edges, please carefully discard the metal sheets after parts have been removed



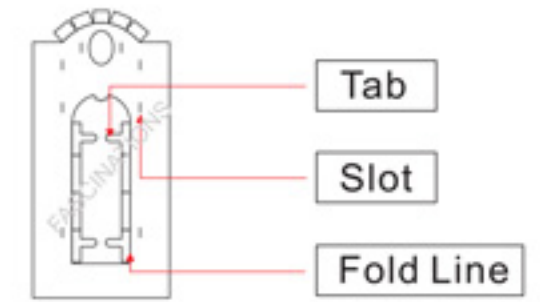
Go to www.metal-earth.com/360/icx119 to see the zoomable PDF version of this instruction sheet

Page 2

ICX119



TO CREATE THE BEST CONNECTIONS



Legends:

- E** Engraved side
- NE** Non-engraved side
- Attention point
- Insert tab and bend 90 degrees
- Insert tab and twist 90 degrees

Recommended tools:

-Wire cutters: helpful for taking parts from the metal sheets.



-Tweezers or needle nose pliers: helpful for folding parts, bending and twisting tabs.

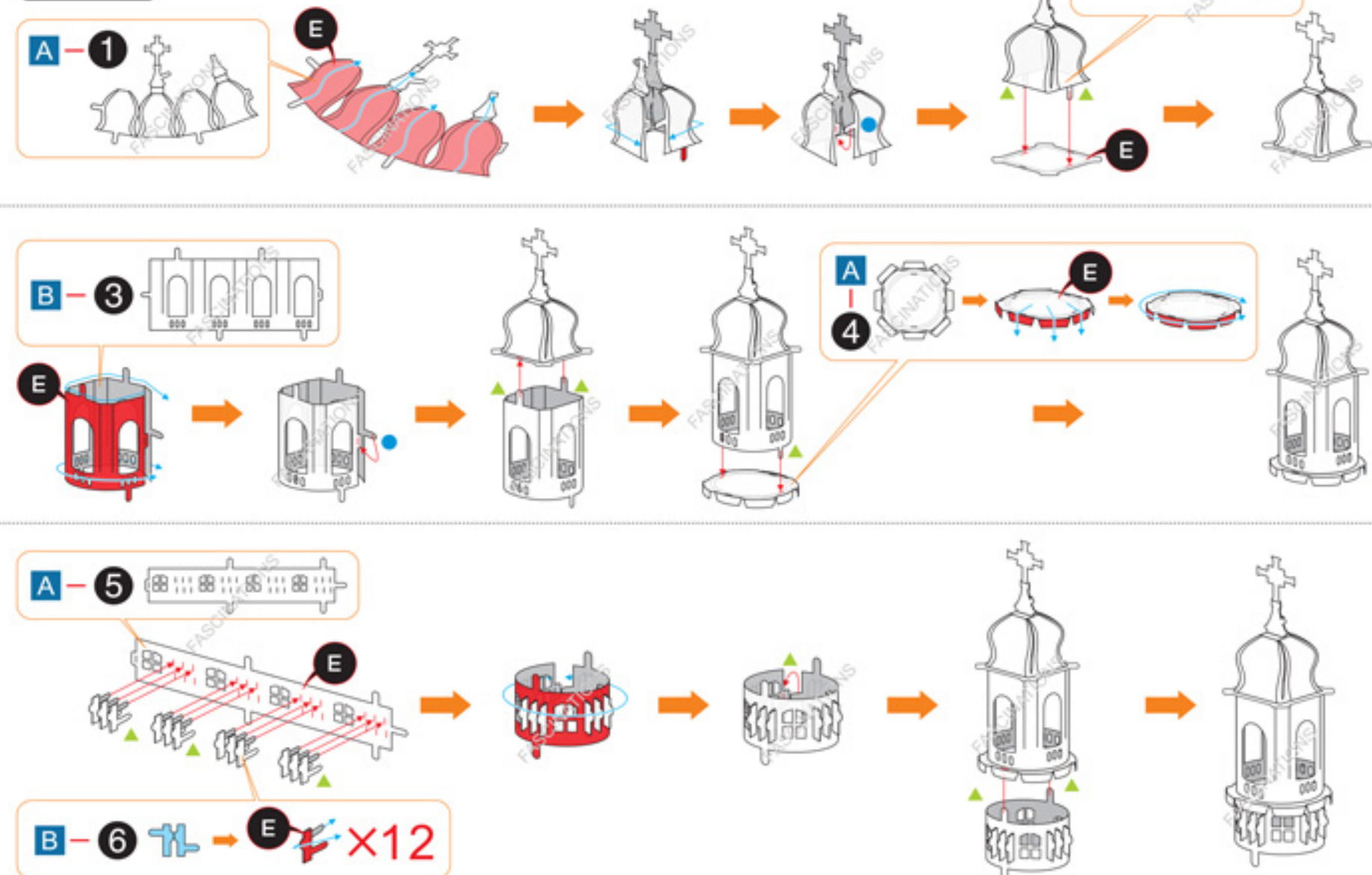


Assembly tip:

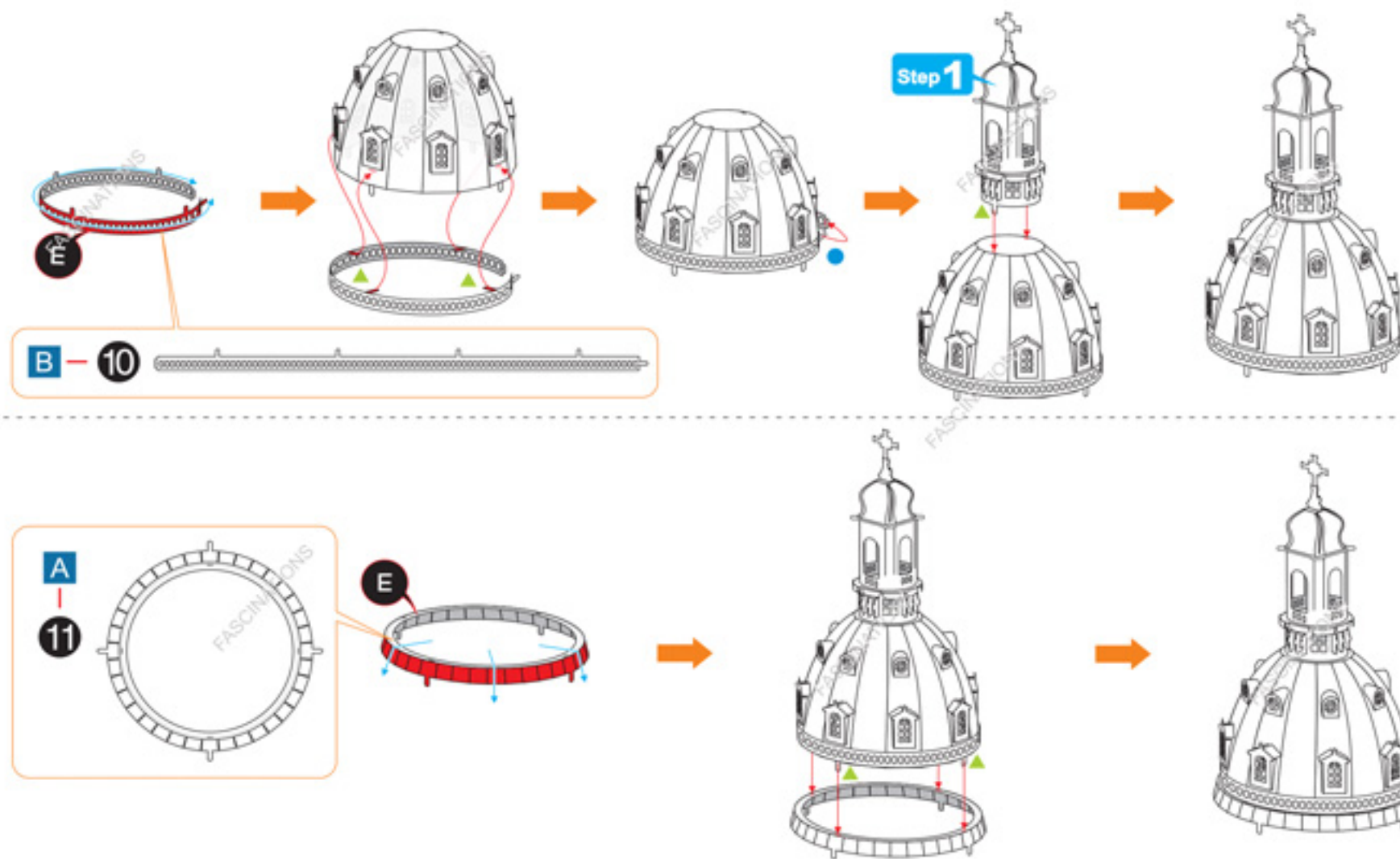
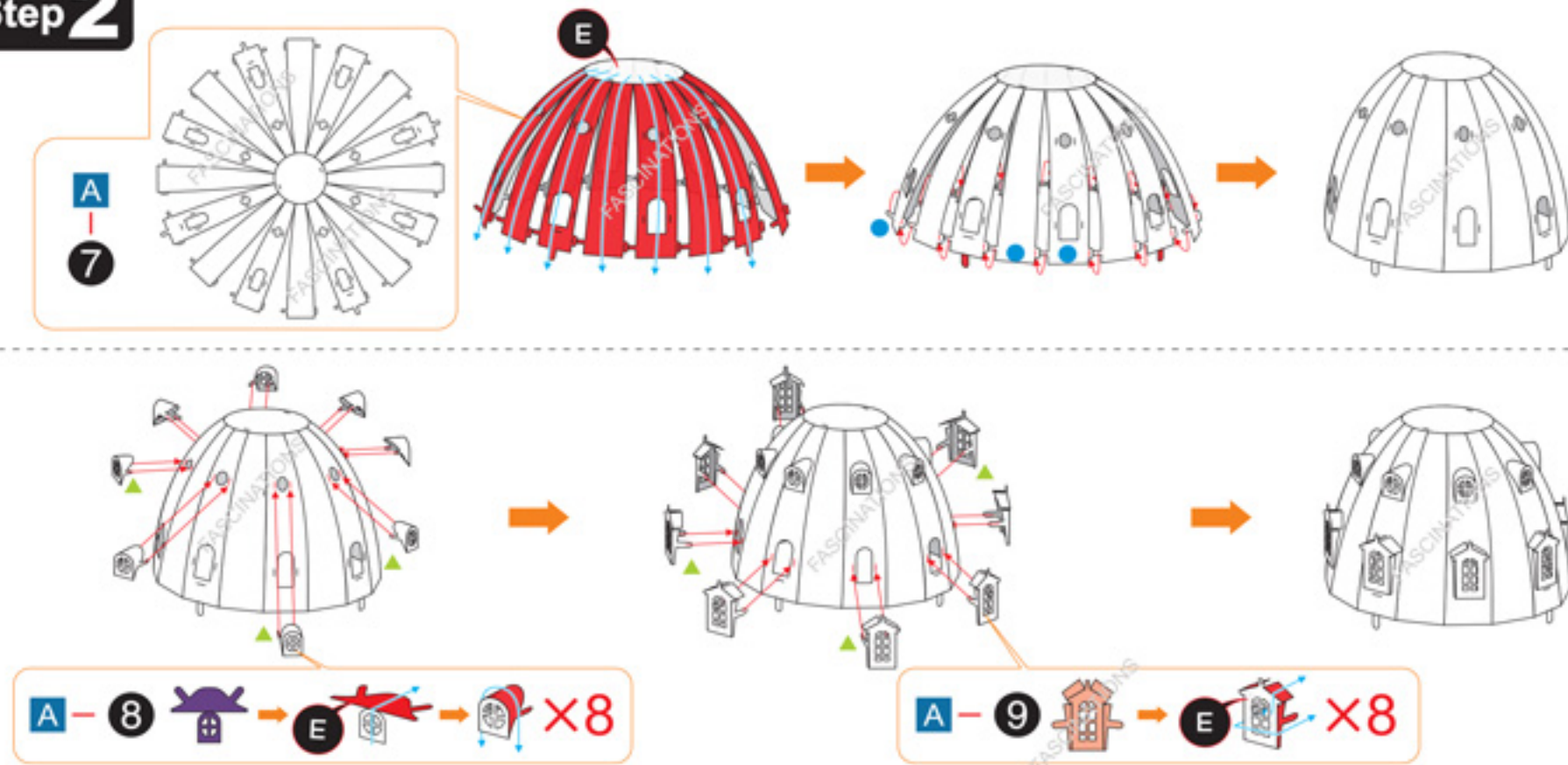
If needed, slightly twist tabs to hold parts together then untwist and bend them down for a nice finish

ASSEMBLY STEPS

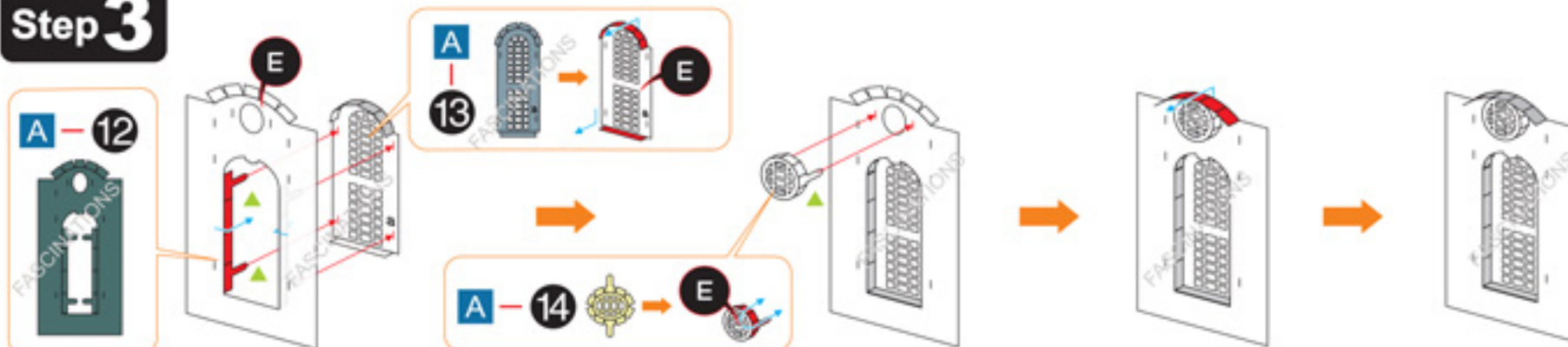
Step 1



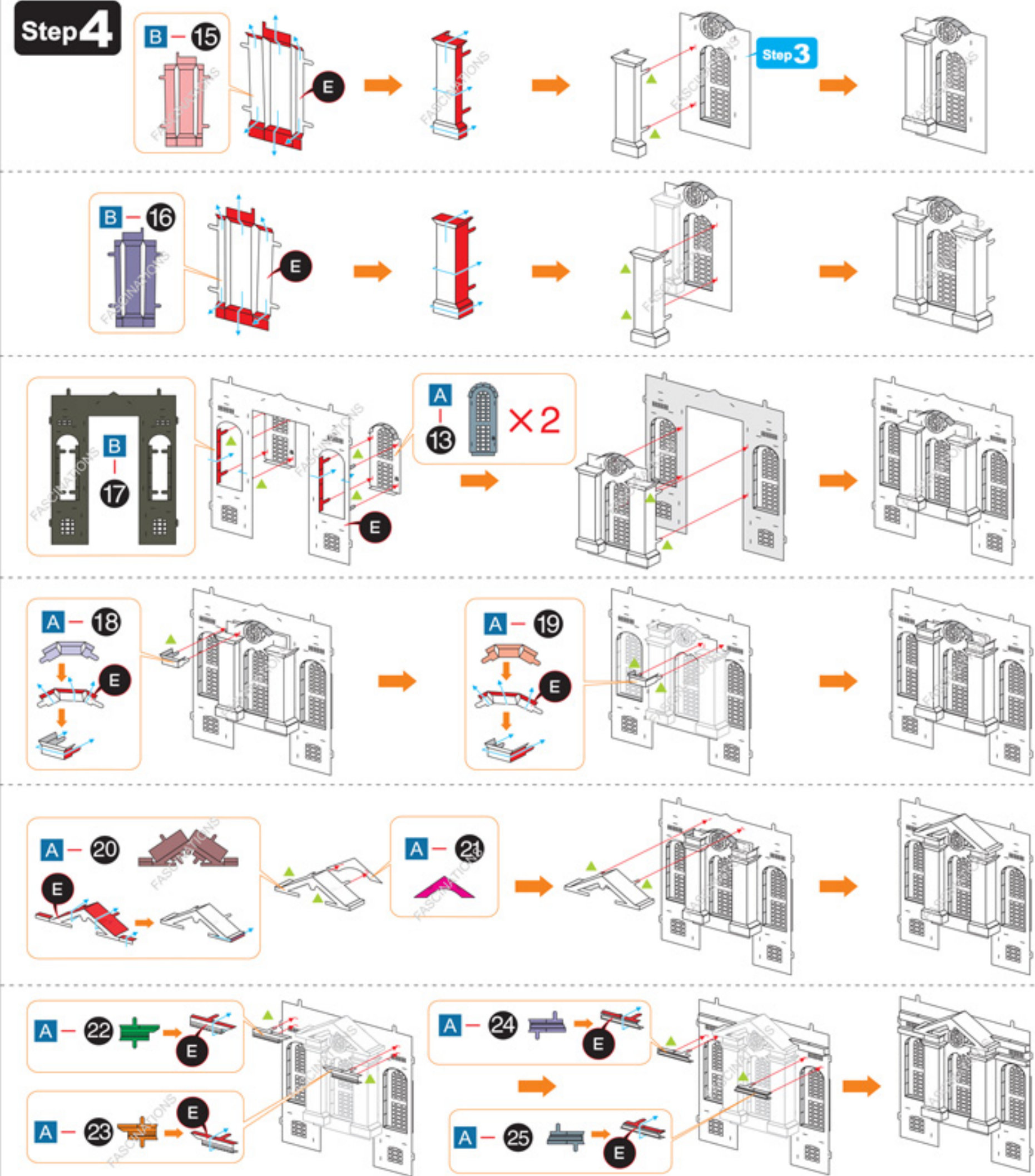
Step 2



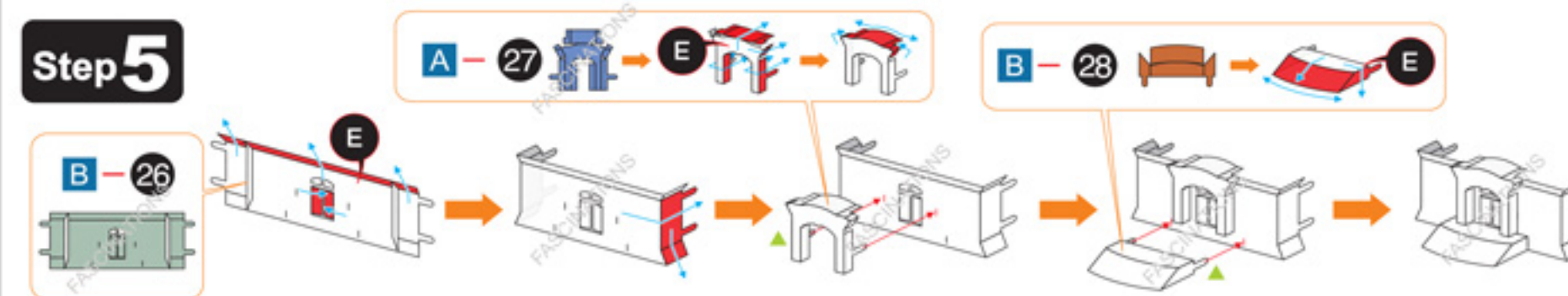
Step 3

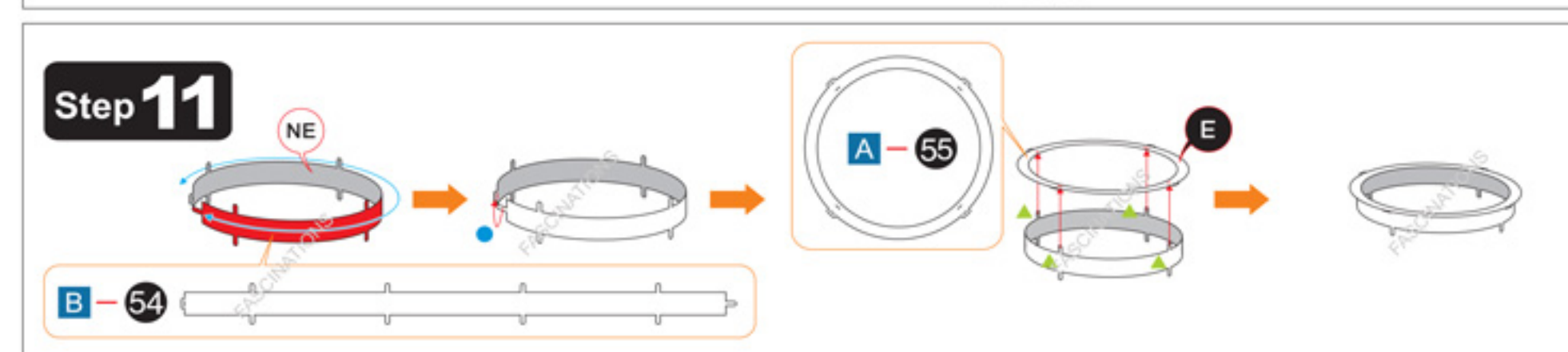
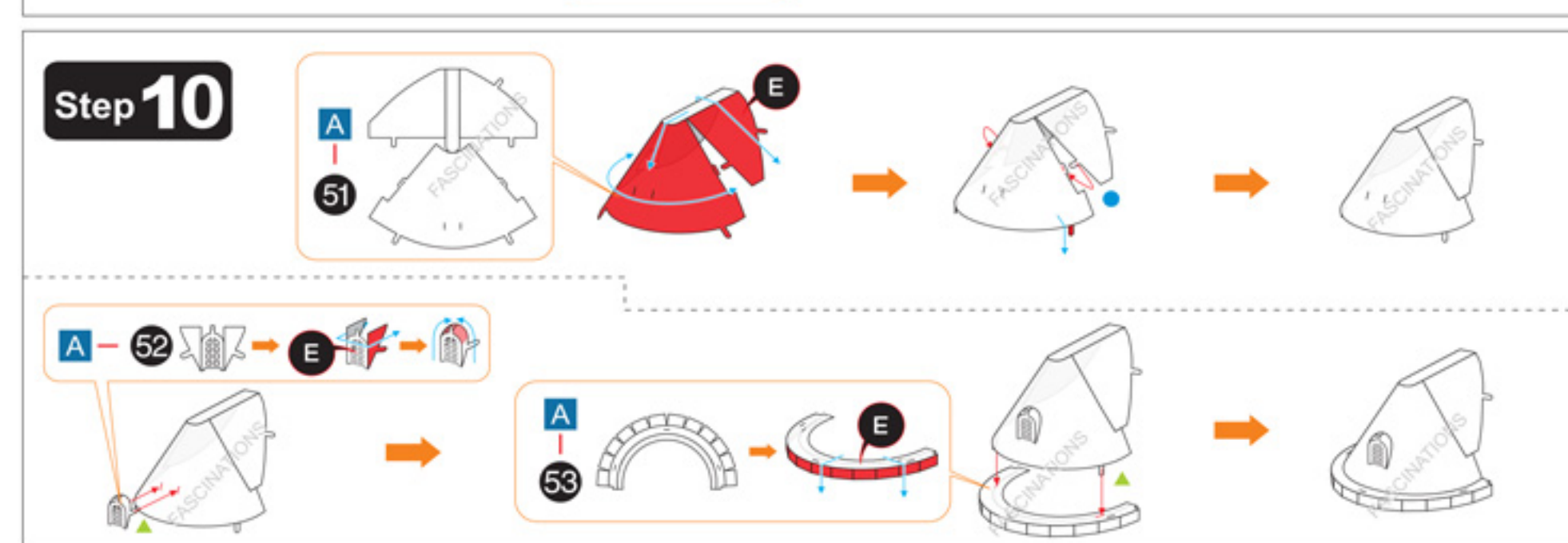
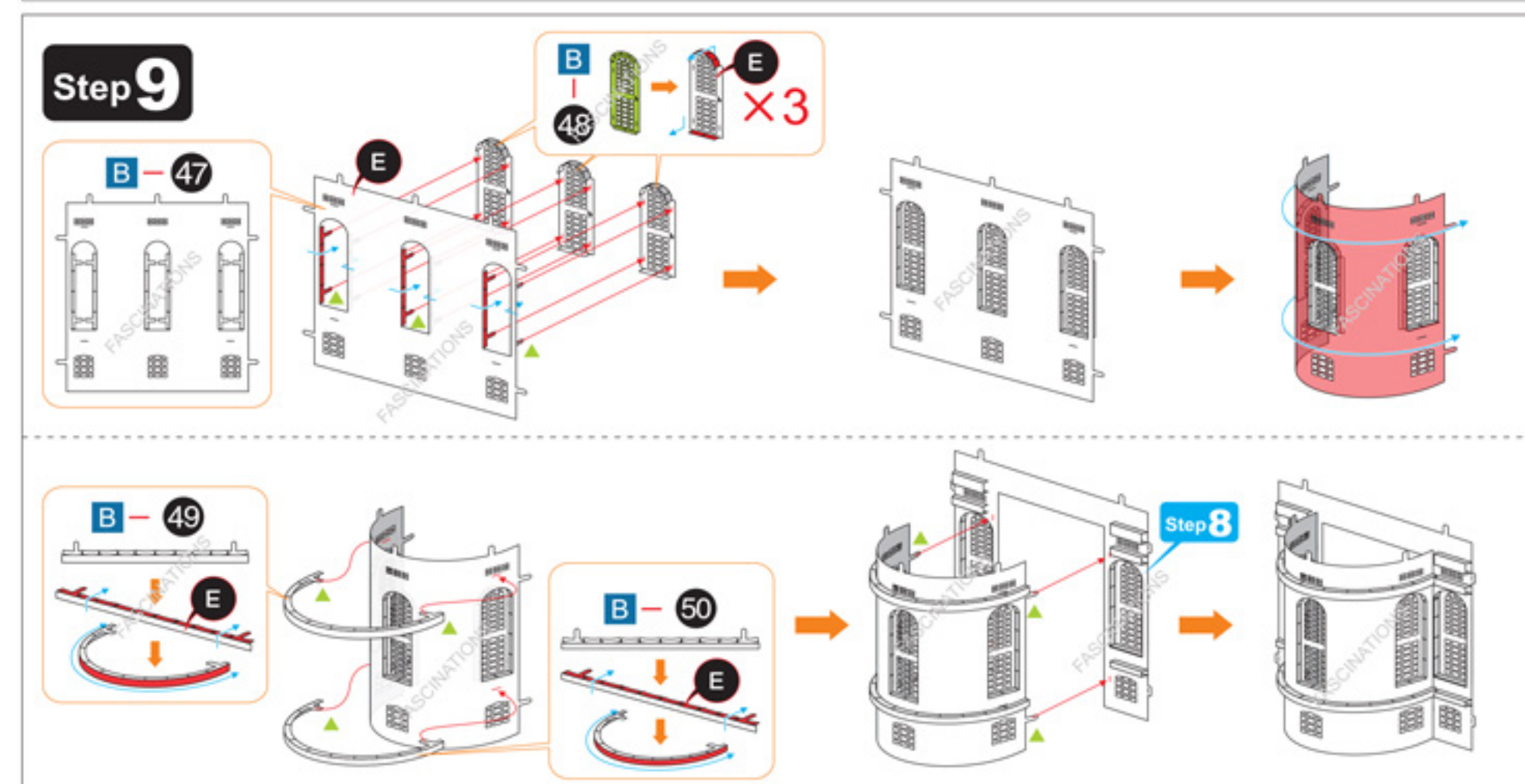
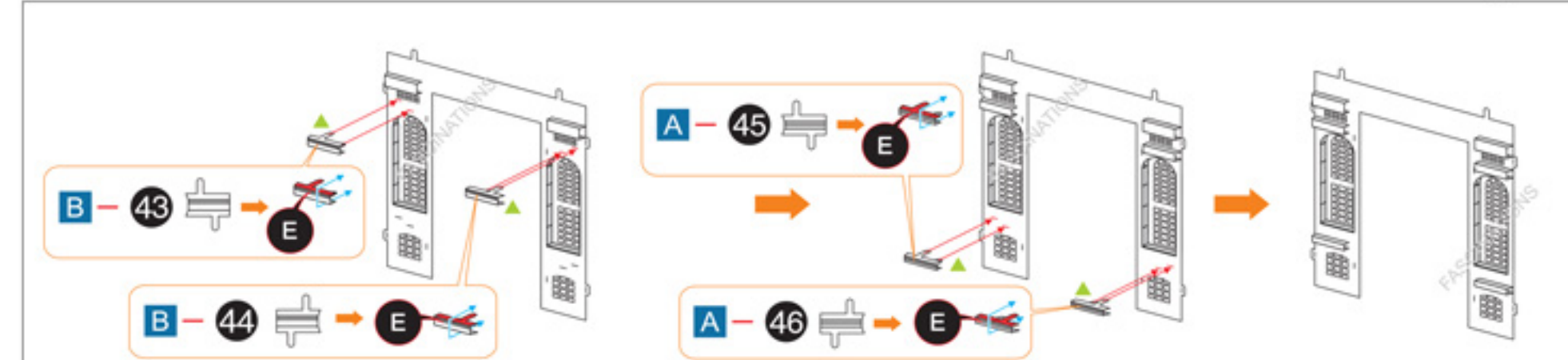
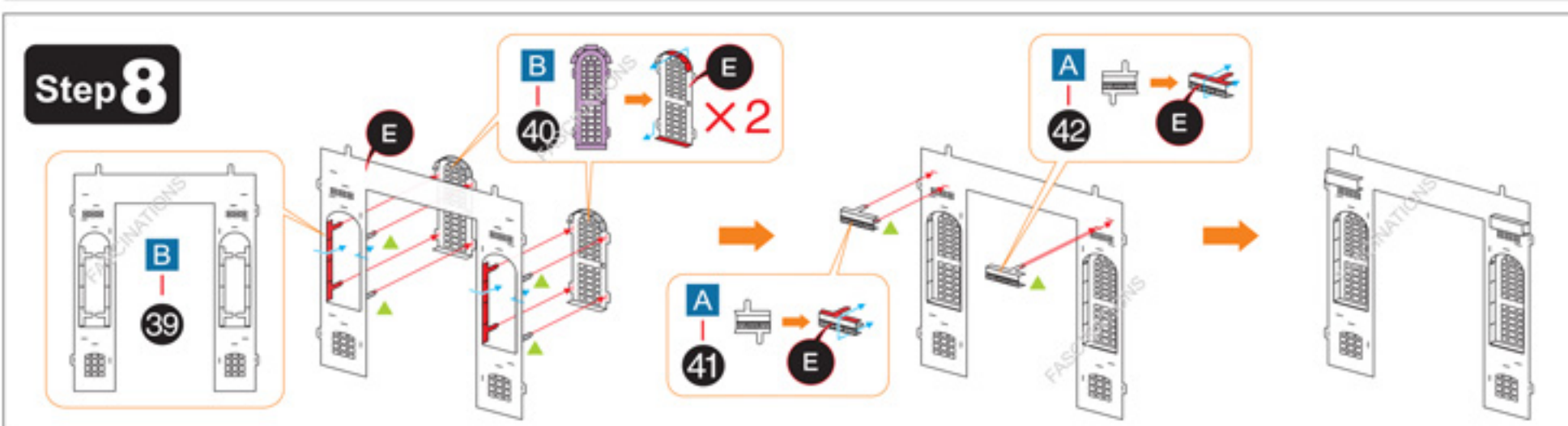
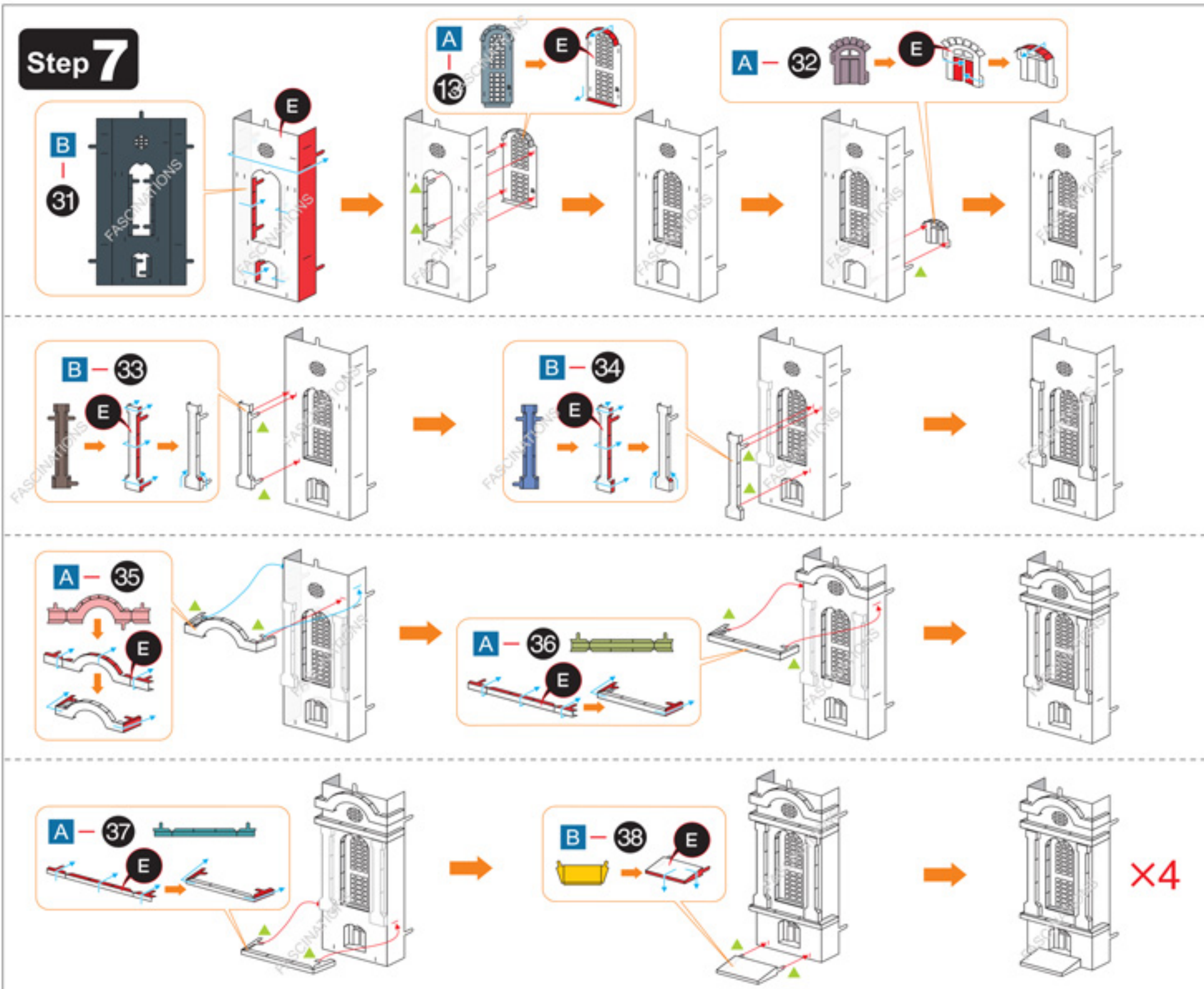
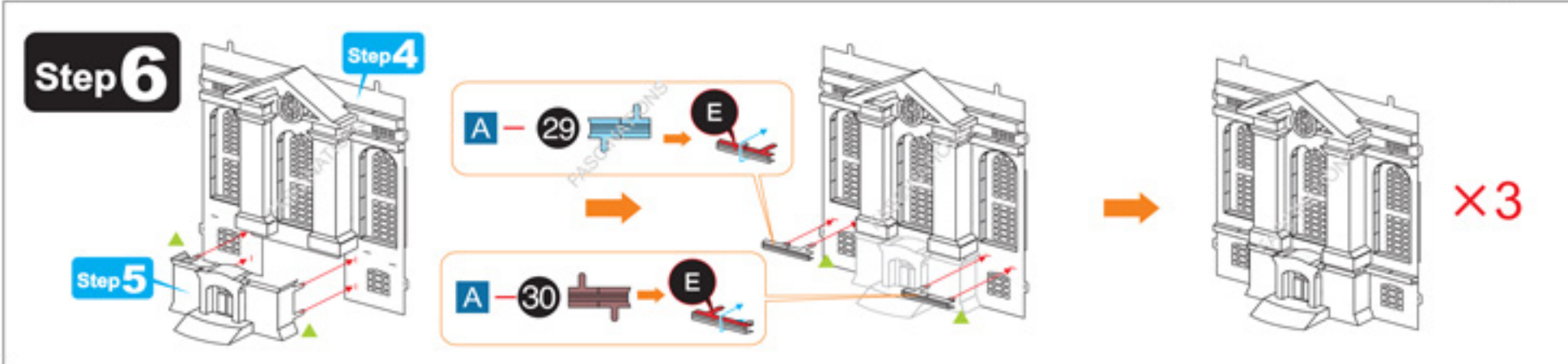


Step 4

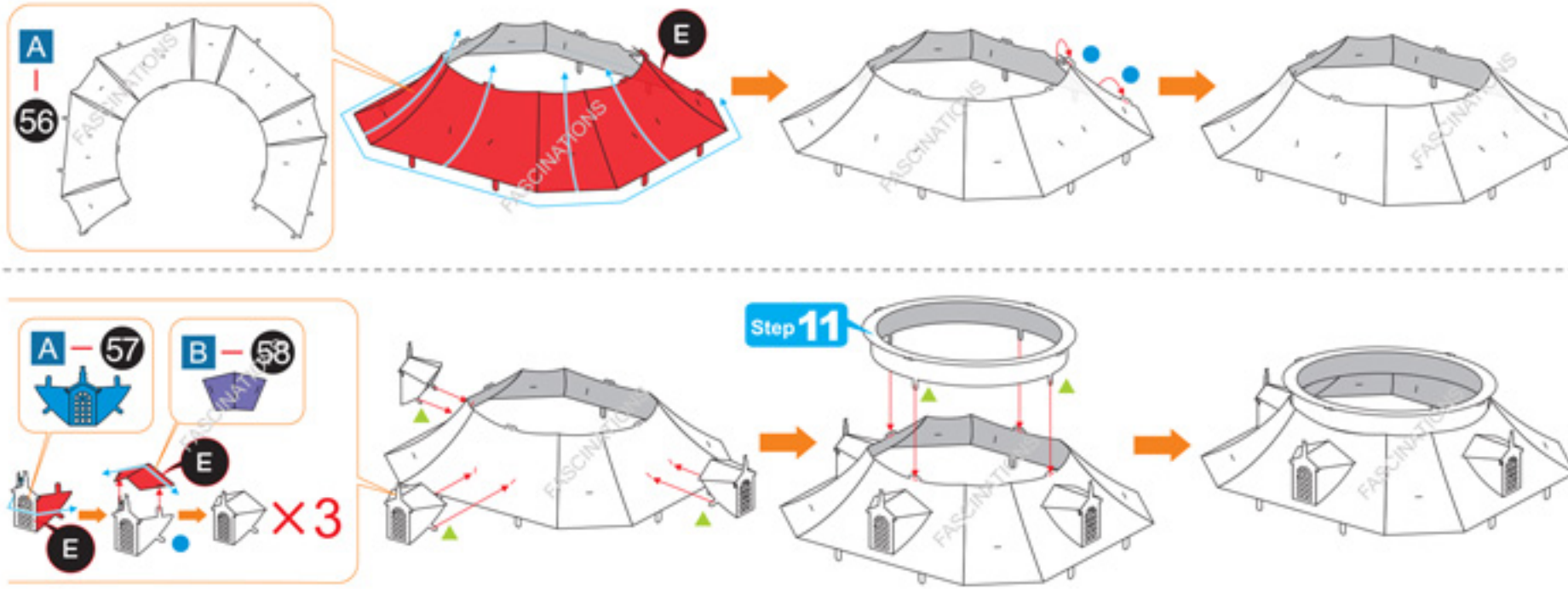


Step 5

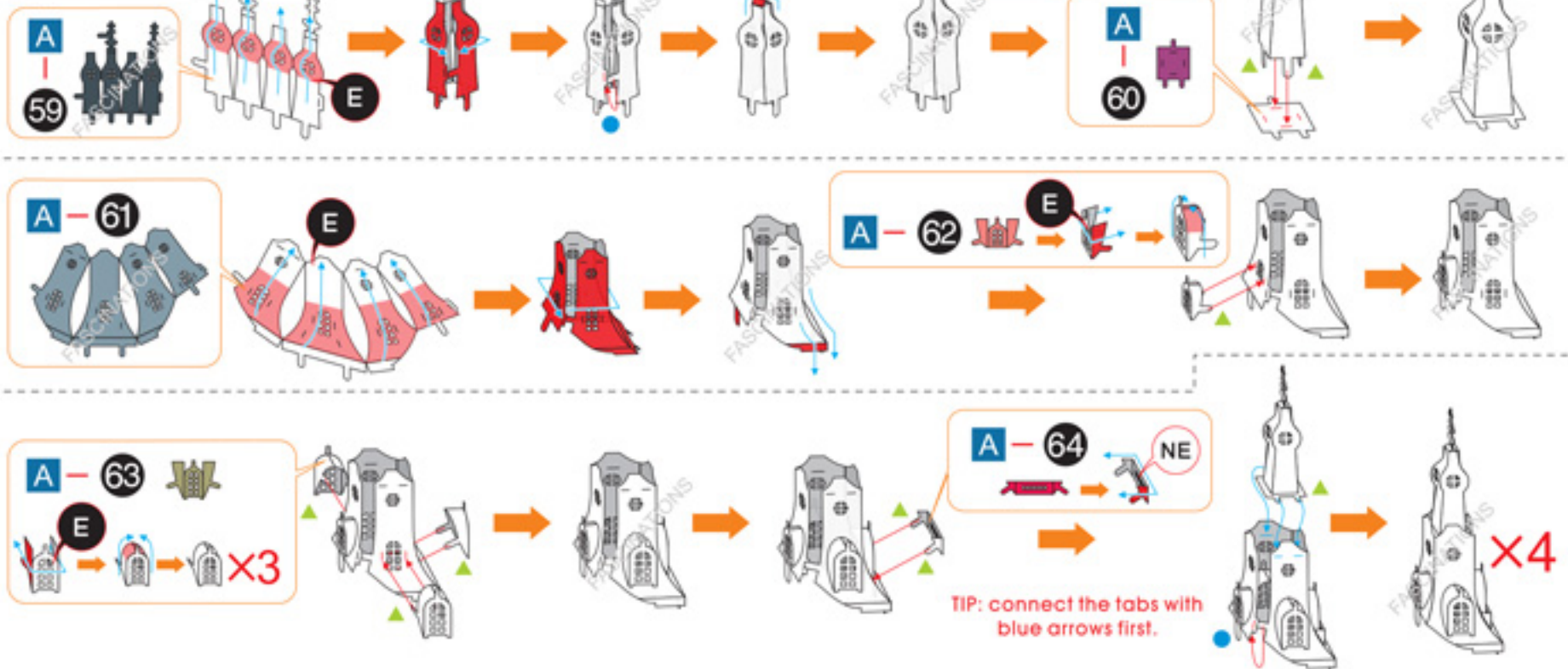




Step 12



Step 13



Step 14

